



BANK OF CANADA  
BANQUE DU CANADA

CELEBRATING 75 YEARS  
CÉLÉBRONS 75 ANS

Working Paper/Document de travail  
2010-35

# **Bank Competition and International Financial Integration: Evidence Using a New Index**

by Gurnain Kaur Pasricha

Bank of Canada Working Paper 2010-35

December 2010

# **Bank Competition and International Financial Integration: Evidence Using a New Index**

**by**

**Gurnain Kaur Pasricha**

International Economic Analysis Department  
Bank of Canada  
Ottawa, Ontario, Canada K1A 0G9  
gpasricha@bankofcanada.ca

Bank of Canada working papers are theoretical or empirical works-in-progress on subjects in economics and finance. The views expressed in this paper are those of the author. No responsibility for them should be attributed to the Bank of Canada or the Hong Kong Institute for Monetary Research.

## **Acknowledgements**

This paper was first written while I was a post doctoral fellow at Hong Kong Institute for Monetary Research (HKIMR). My thanks to HKIMR for research support. I would also like to thank Joshua Aizenman, Yin-Wong Cheung, seminar participants at HKIMR, seminar participants at 14th International Conference on Macroeconomic Analysis and International Finance at Rethymno, Crete, Eric Santor, Robert Lavigne and an anonymous referee for useful comments and suggestions, and to Hiro Ito and Rajeshwari Sengupta for help with data.

## Abstract

This paper finds a strong empirical link between domestic banking sector competitiveness and de facto international integration. De-facto international integration is measured through a new index of financial integration, which measures, for deviations from covered interest parity, the size of no-arbitrage bands and the speed of arbitrage outside the no-arbitrage band. The strong empirical link between de-facto integration and domestic financial sector competitiveness allows us to reinterpret the recent literature on the benefits and costs of international financial integration. This literature has emphasized the development of domestic markets as a precondition to benefiting from international integration. This paper offers an alternative view. Lack of competition in domestic financial systems may prevent countries from reaping the benefits of international integration simply because it prevents them from being integrated in a meaningful way – that of price equalization. This finding suggests that financial sector consolidation of the type recently witnessed in the crisis environment may have negative consequences for countries' de-facto international financial integration. Another important result of the paper is that the level of de-jure controls have a limited association with de-facto integration, particularly for developing economies.

*JEL classification: F32, G15, G21*

*Bank classification: Econometric and statistical methods; Financial markets; International topics*

## Résumé

Notre étude montre qu'il existe un lien empirique étroit entre la compétitivité du secteur bancaire national et l'intégration effective à l'échelle internationale. Cette dernière est mesurée à l'aide d'un nouvel indice qui permet de calculer, pour des écarts par rapport à la parité des taux d'intérêt avec couverture, la taille des zones de non-arbitrage et la rapidité de l'arbitrage en dehors de ces zones. La force du lien empirique entre l'intégration effective et la compétitivité du secteur financier national nous permet de réinterpréter la littérature récente sur les coûts et les avantages de l'intégration financière internationale. Cette littérature présente le développement des marchés intérieurs comme une condition préalable à la capacité de bénéficier de l'ouverture mondiale. Notre étude offre un point de vue différent. Le manque de concurrence au sein des systèmes financiers nationaux empêche certains pays de tirer parti de l'intégration internationale tout simplement parce qu'ils sont privés d'un avantage significatif de l'intégration, à savoir l'égalisation des prix. Ce résultat donne à penser qu'une intégration financière semblable à celle qui a été observée au cours de la récente crise peut avoir des conséquences négatives pour l'intégration financière effective à l'échelle mondiale. Autre résultat important, nous constatons que l'étendue des restrictions officielles n'a qu'un lien limité avec le degré d'intégration effective, surtout dans les économies en développement.

*Classification JEL : F32, G15, G21*

*Classification de la Banque : Méthodes économétriques et statistiques; Marchés financiers; Questions internationales*

In a friction free world, the decrease in domestic banking sector competition does not influence a country's international financial integration. In such a world, the global financial sector is effectively the domestic financial sector and complete price convergence occurs. However, in the presence of real-world frictions like asymmetric information or capital controls, that prevent full access of domestic agents to international financial markets, the degree of monopoly power in domestic banking sector becomes an important determinant of the degree of price convergence between the domestic and the global financial markets. While there is some literature (discussed in section 1) that deals with the theoretical link between competitiveness in the domestic banking sector and international integration in the presence of real world frictions, the empirical strength of this link has not been adequately explored.<sup>1</sup> In this paper, I use a novel measure of de-facto integration and find that, particularly for emerging and developing economies, the empirical link between domestic banking sector competitiveness and de-facto international integration is strong. This result has important policy implications. Countries with partially open capital accounts should see greater price convergence with international markets if they liberalized their domestic banking sector, even without opening it to foreign players. Countries with less than fully open capital accounts may also further restrict flows of international capital without appearing to do so, through tightening domestic banking regulation. The result that financial sector consolidation has negative consequences for a country's de-facto integration also implies that the banking consolidation during the recent global financial crisis may have a detrimental effect on the extent of global financial integration.

Another important result of the paper relates to the effectiveness of capital controls. Indeed, the global reach of the crisis re-energized the contentious debate on the benefits of international financial integration, with some countries

---

<sup>1</sup>The empirical literature on domestic banking sector competitiveness has explored its implications for economic growth (Claessens and Laeven, 2005; Cetorelli, 2001), access to finance (Beck et. al, 2004) and stability (Boyd et. al., 2007; Boyd and Nicola, 2005; Allen and Gale, 2004; Hartmann and Carletti, 2002).

resorting to capital controls to manage capital inflows in the wake of the crisis. On October 20, 2009, Brazil became the first emerging market to tighten capital controls after the crisis, with the re-introduction of Imposto sobre Operações Financeiras (IOF), a 2% tax on all foreign purchases of Brazilian fixed and variable rate instruments. Furthermore, the International Monetary Fund (IMF) staff reversed a longstanding position of supporting unfettered financial openness to endorse capital controls in response to surges in capital inflows (Ostry et. al., 2010). I find that for emerging and developing markets, capital controls play a small role in determining price convergence with the rest of the world.

While there is a large literature on measuring the effectiveness of capital controls, it has thus far been dominated by country-specific studies (Magud and Reinhart, 2006; Garcia and Carvalho, 2006). This paper uses a broad panel of economies and a novel measure of de-facto integration that measures the impact of controls on price differentials. The de-facto integration measure is based on deviations from covered interest parity and therefore excludes price differentials due to currency risk.<sup>2</sup> It also captures both the average equilibrium price differentials induced by frictions like capital controls and the speed with which disequilibrium differentials are arbitrated away.

Taken together, the results in the paper indicate that for emerging and developing economies, financial sector competition is at least as important than de-jure openness (or capital controls) in determining de-facto integration. This has important implications for our understanding of the benefits and costs of financial integration. For instance, recent literature has failed to find an unambiguous link between de-jure openness and economic growth.<sup>3</sup> It has, therefore, focussed on the possibility that financial development serves as a catalyst in the relationship between financial integration and growth. This literature argues that a minimum level of financial development is a pre-condition to benefitting from financial integration. The results of this paper suggest that one of the rea-

---

<sup>2</sup>See Ito and Chinn, 2007 for a panel study of determinants of de-facto integration based on deviations from uncovered interest parity.

<sup>3</sup>See Kose et. al. (2009), Obstfeld (2009) and references therein.

sons the literature has not been able to find a strong link between openness and growth could be that we have been using a poor measure of openness (capital controls). The results here also suggest that lack of competitiveness may prevent countries from reaping the benefits of financial integration simply because it prevents them from being integrated in a meaningful way - that is, achieving price equalization.

The next section provides some theoretical background for a link between bank competitiveness and international financial integration. Section 2 explains the construction of the index of integration. Section 3 discusses the macroeconomic variables used to explain de-facto integration. Section 4 presents the results and section 5 concludes.

## **1 What links banking sector competition and international price convergence?**

In the absence of capital controls and any kind of friction such as asymmetric information that prevents all domestic participants from accessing foreign markets and vice versa, price-convergence with international financial markets will occur, irrespective of the structure of domestic financial markets. It is only when either capital controls or some other frictions are present (as in the real world) that the structure of the domestic financial market becomes relevant. Freixas and Holthausen (2005) show that even with fully liberalized capital accounts, asymmetric information between domestic and foreign markets may lead to a segmented market equilibrium, with no interbank activity across the borders. They further show that when an integrated equilibrium does occur, interbank market integration will not be perfect (the interbank rates will not be equalized), even in the presence of correspondent banking. In their model, the signal that banks obtain about foreign banks' type is more noisy than the signal about domestic banks, leading to an interest differential at which a bank may borrow domestically and the interest rate at which it may borrow abroad (or from a

correspondent bank that borrows abroad to lend domestically). Adding imperfect competition in domestic banking sector to their model will exacerbate the domestic-foreign interest differentials and may increase the range of possibilities where a segmented equilibrium is the only possibility.

While Freixas and Holthausen (2005) assume a fully open capital market, other explanations for the link between domestic bank competition and international price convergence assume the presence of at least some capital controls. When foreign and domestic markets are partially segmented, market power in the domestic interbank market would lead to greater bid-ask spreads directly (Khemraj and Pasha, 2008; Pasricha, 2008b) and through its impact on market liquidity. Carletti, Hartmann and Spagnolo (2007) show that bank consolidation may lead to greater variance in aggregate liquidity demand and Acharya, Gromb and Yorulmazer (2008) demonstrate that surplus banks may strategically under-provide liquidity when outside options of illiquid banks are weak. Several empirical studies of the foreign exchange markets have shown that thinner markets or those with greater volatility have higher bid-ask spreads (Cheung and Chinn, 2001; Bollerslev and Melvin, 1994). The higher spreads would add to the measured wedge between domestic and foreign interest rates.

## 2 Measuring Price Convergence

When markets are financially integrated, the law of one price (LOOP) holds; i.e., all potential agents in domestic and foreign markets (with the same relevant characteristics) will face identical prices for identical assets. In this paper, price convergence is measured by the index introduced in Pasricha (2008a). The index compares interest rates on interbank loans across countries. It captures the size of no-arbitrage band for deviations from covered interest parity as well as the speed of reversion to the no-arbitrage band when deviations lie outside the band (and are therefore profitable). The index is constructed on a yearly basis for 54 countries for an average of 13 years per country<sup>4</sup>. Previous attempts

---

<sup>4</sup>The list of countries and the years for which data is available are listed in Table 1.



at measuring price convergence in financial markets have focused on either average absolute deviations (Chinn-Ito, 2007), which do not capture the speed of arbitrage, or the beta-convergence measure (Baele et. al, 2004), which captures integration between a group of countries but does not allow one to rank different countries on their degree of convergence. The index developed here was the first time-varying index that allowed one to rank countries in terms of de-facto integration and took into account both the size of their no-arbitrage bands and the speed with which the arbitrage occurs, once it is profitable<sup>5</sup>. A recent paper by Levy-Yeyati et. al. (2009) also applies the TAR model on measuring deviations from LOOP on cross-listed stocks from different countries to study their international integration, although they do not propose a unified index. While comparing the price of a domestically listed stock and that of its depository receipt abroad solves the issue of comparability of the underlying asset on which LOOP is applied, it raises other issues. As the authors note, wider average no-arbitrage bands in stocks of one country than those of another country, cannot be interpreted to mean that the former is less integrated than the former because lower liquidity of the individual stocks increases its price differential between domestic market and the foreign market. While liquidity in interbank markets also varies between countries, this liquidity is more likely to be directly a consequence of the international integration of the country and the capital controls it imposes, than that of any given cross-listed stock. Moreover, using interbank markets allows one to compare a larger set of countries, over a longer time period.

## **2.1 Covered Interest Deviations in the Presence of Frictions**

In a fully integrated world with perfectly competitive profit maximizing agents and no transactions costs or other frictions, the following Covered Interest Parity

---

<sup>5</sup>The no-arbitrage band captures the minimum deviation required for arbitrage to be profitable and increases with the size of transactions costs and capital controls.

(CIP) condition holds in equilibrium:

$$\delta_t = \left( \frac{F_{t+k} - S_t}{S_t} \right) - \frac{i_{t+k} - i_{t+k}^*}{1 + i_{t+k}^*} = 0 \quad (1)$$

where  $\delta_t$  is the covered interest differential,  $i_{t+k}$  and  $i_{t+k}^*$  are respectively returns on comparable domestic and foreign assets between time  $t$  and  $t+k$ .  $S_t$  is the domestic currency price of foreign currency,  $F_{t+k}$  is the forward rate or the  $k^{th}$  period domestic currency price of foreign exchange delivered in that period. Since all the variables in the above equation are known a priori, any deviation from this equality in our model world represents pure profits and therefore cannot exist in equilibrium.

However, as discussed in Frenkel and Levich (1975) and Pasricha(2008a), in a world with transactions costs, exchange or capital controls (or risk of such controls) and/or differential taxation, the measured covered differential lies in a no-arbitrage band, even with efficient and risk neutral markets. This happens because the econometrician's measure of the covered differential, which is based on the average of the forward and spot rates (rather than the bid-ask rates) and the average of the interest rates does not capture the actual profits, net of taxes, and other costs of arbitrage. One should then expect the measured differential,  $\hat{\delta}$  to satisfy:

$$\kappa_n \leq \hat{\delta} \leq \kappa_p \quad (2)$$

where

$$\hat{\delta} = P \left( \frac{F - S}{S} \right) - \frac{i - i^*}{1 + i^*}.$$

In the above equation, and throughout the empirical part of this paper, the interest rates are expressed in percent per annum and  $P$  is a scaling factor, used to convert the first term into annualized percentage terms.<sup>6</sup> The precise forms of  $\kappa_n$  and  $\kappa_p$  depend on the transactions costs and capital controls (as well as the levels of exchange and interest rates).<sup>7</sup> The measured deviations within the no-arbitrage bands are therefore consistent with equilibrium and with covered

<sup>6</sup>For example, if the forward rates are of maturity 1 month, then  $P = 1200$ .

<sup>7</sup>These are described in Pasricha(2008a).

interest parity, and may be unit root processes. Further, when the supply of arbitrage capital is less than perfectly elastic, due either to quantitative controls, asymmetric information, or imperfect competition in markets, profitable deviations may not be immediately arbitrated away (Cheng and Cheung, 2008; Fong, Valente and Fun, 2008).<sup>8</sup>

## 2.2 Empirical Model for Covered Interest Deviations

These considerations lead one to the choice of an Asymmetric, Self-Exciting Threshold Autoregressive Model (ASETAR) model as the empirical model to estimate the boundaries of the no-arbitrage band (called the thresholds) and the speed of reversion outside the band. This model is called ‘self-exciting’ because the thresholds are lags of the dependent variable itself, and asymmetric because the negative threshold is allowed to differ from the positive threshold. The ASETAR model takes the form:

$$\delta_t = \rho_i \delta_{t-1} + \epsilon_t \quad \text{for } \kappa_n < \delta_{t-1} < \kappa_p, \quad (3)$$

$$\delta_t - \kappa_n = \rho_n (\delta_{t-1} - \kappa_n) + \epsilon_t \quad \text{for } \delta_{t-1} \leq \kappa_n, \quad (4)$$

$$\delta_t - \kappa_p = \rho_p (\delta_{t-1} - \kappa_p) + \epsilon_t \quad \text{for } \delta_{t-1} \geq \kappa_p, \quad (5)$$

where  $\epsilon_t \sim N(0, \sigma^2)$ , and  $\kappa_n$  and  $\kappa_p$  are the negative and positive thresholds, respectively. In theory, the deviations inside the band are unit-root processes, so the model is estimated with  $\rho_i = 1$ . Note that this model implies that speculative activity will push the deviations to the edges of the band, rather than its center. The hypothesis of efficient arbitrage states that the AR(1) process outside the bands be stationary. If the thresholds were known, the model could be estimated by ordinary least squares applied separately to the inner regime and outer regime observations. Since the thresholds are not known, they are estimated by a sequential method suggested in Hansen(1999) that yields confidence intervals for the thresholds. In Hansen’s method, a grid search is first made for a single threshold, yielding a minimum residual sum of squares,  $S_1(\tilde{\kappa}_1)$ , where

---

<sup>8</sup>In rational markets, the deviations would eventually be arbitrated away.

the function  $S$  everywhere denotes the residual sum of squares function. In a two regime model, the first search would yield the stronger of the two threshold effects. Fixing the first-stage estimate  $\tilde{\kappa}_1$ , the second-stage criterion is:

$$S_2(\kappa_2) = \begin{cases} S(\tilde{\kappa}_1, \kappa_2) & \text{if } \tilde{\kappa}_1 < 0 \\ S(\kappa_2, \hat{\kappa}_1) & \text{if } \tilde{\kappa}_1 > 0, \end{cases} \quad (6)$$

and the second-stage threshold estimate is the one that minimizes the above function, i.e.:

$$\hat{\kappa}_2 = \operatorname{argmin} S_2(\kappa_2). \quad (7)$$

The estimate of the first threshold is then refined as follows:

$$S_1^r(\kappa_1) = \begin{cases} S(\hat{\kappa}_2, \kappa_1) & \text{if } \hat{\kappa}_2 < 0 \\ S(\kappa_1, \hat{\kappa}_2) & \text{if } \hat{\kappa}_2 > 0, \end{cases} \quad (8)$$

and the refinement estimator for the first threshold is:

$$\hat{\kappa}_1 = \operatorname{argmin} S_1^r(\kappa_1). \quad (9)$$

As a practical matter, the search is conducted over all unique values of the actual observations between the 5<sup>th</sup> and the 95<sup>th</sup> percentiles and is restricted so that at least 5% of the observations fall in each of the three regimes. When the model is estimated for every year using daily observations, this restricts the minimum number of observations in each regime to be between 10 and 12.

This process of optimization also yields confidence intervals for the thresholds. Define

$$L_2^r(\kappa_2) = \frac{S_2(\kappa_2) - S_2(\hat{\kappa}_2)}{\sigma^2}$$

and

$$L_1^r(\kappa_1) = \frac{S_1^r(\kappa_1) - S_1^r(\hat{\kappa}_1)}{\sigma^2}.$$

The asymptotic  $(1 - \alpha)\%$  confidence intervals for  $\kappa_1$  and  $\kappa_2$  are the set of values of each such that  $L_1^r(\kappa_1) \leq c(\alpha)$  and  $L_2^r(\kappa_2) \leq c(\alpha)$ . Hansen(1999) also shows that

$$c(\alpha) = -2\log(1 - \sqrt{1 - \alpha}).$$

### 2.3 Integration Index

To construct the Integration Index, Pasricha (2008a) takes into account five different measures that are derived from the model. The first is the bandwidth, which measures the size of the no-arbitrage band, and is expected to be wider the greater the transactions costs or the effective controls in an economy. To capture how frequent are profitable deviations from interest parity, and how fast they revert back to the band, Pasricha (2008a) considers the following measures: (1) the percentage of observations lying in the outer regimes, *OutObs* (2) the median positive deviation outside the measured band, *MedDevP* (3) the median negative deviation outside the measured band, *MedDevN* and (4) the third quartile of continuous runs outside the band, *3rdQrt*. The more elastic the supply of capital and the less effective the controls, the faster the reversion speed<sup>9</sup>. One could also use the AR coefficients in outer regimes or the half lives, but the results should be similar. Using the percentage of observations rather than number of observations takes care of the concern about uneven sample sizes influencing the latter. Lastly, medians and quartiles are preferable to average deviations as they are immune to outliers.

Each of the indicators mentioned above are first normalized by subtracting from them their inter-country mean and dividing by the standard deviation. This centers the resulting index at zero and also converts the components into pure numbers so they can be averaged. The normalizations are done separately for the two maturities, one and three months. For countries for which data on one of the maturities is not available, the available maturity's data is used to approximate for the missing maturity model. The Integration Index for country  $j$  time  $t$ ,  $I_{jt}$  is:

$$I_{jt} = \frac{\sum_{k=1,2} I_{jkt}}{K}$$

---

<sup>9</sup>Note that the paper uses daily data, and thus measured deviations are those that were present at the end of the day.

where

$$I_{jkt} = -\frac{\widetilde{Bandwidth}_{jkt} + \widetilde{OutObs}_{jkt} + \widetilde{MedDevN}_{jkt} + \widetilde{MedDevP}_{jkt} + \widetilde{3rdQrt}_{jkt}}{5} \quad (10)$$

$$\widetilde{X}_{jkt} = \frac{X_{jkt} - \overline{X}_k}{\sigma_k}, \quad (11)$$

where  $k$  indexes maturity of the underlying contracts (here, 1-month and 3-month contracts) and  $K = 2$ .  $\overline{X}_k$  and  $\sigma_k$  are respectively, the mean and standard deviation over all country-time observations of maturity  $k$  of  $X$ , for  $X = Bandwidth, OutObs, MedDevN, MedDevP, 3rdQrt$ . Equation (11) normalizes each of the variables ( $Bandwidth, OutObs$  etc) so that the resulting normalized variables are numbers and can be averaged.

Since there are no theoretical priors that allow one to assign different weights on the different components of the index based on their contribution to financial integration, this index uses a simple average. A simple average is chosen for transparency and tractability. It is based on the premise that greater integration means both that there are smaller deviations from parity and that these deviations are arbitrated away more quickly. The negative sign in (10) allows larger values of the index to be interpreted as greater integration.

## 2.4 Data and Summary Statistics of Integration Index

To construct the index, interest rates on interbank loans of 1- and 3-month maturities were used. For Brazil, interbank interest rates were unavailable, so the Certificate of Deposit rates were used. The data on interbank rates are from Bloomberg and Thomson Financial's Datastream databases for all countries except South Africa and Columbia, whose rates were sourced from Global Financial Database (as these were unavailable in Bloomberg or Datastream). The exchange rate data is from Bloomberg and Datastream. The forward exchange rates are onshore forward rates of 1 and 3 month maturities, except for Chile where onshore forward data was unavailable so non-deliverable forwards were used. For countries that had adopted the Euro, the exchange rates pertain to the Euro after January 1, 1999 or their date of accession, whichever is later.

Table 1 lists the countries and years for which the index is available and Table 2 summarizes the index for the whole sample and for high income and low and middle income country groupings respectively (World Bank Classification). High income countries have on average, greater integration than low and middle income countries (0.6 compared to average integration of -0.18 for the low and middle income group) and lower variability. Figure 1 plots the average estimated bandwidth for all countries, over the period 2000-2006. As expected, the estimated bandwidths are very small for high income countries and large for low and middle income countries. Figure 2a plots the index over time for high income and middle and low income country groups. The figure highlights the fact that the level of price convergence is not static. It fluctuates from year to year, even for high income countries. Clear evidence of these fluctuations was provided by the recent financial crisis of 2007-08. However, it is important to keep in mind that the figure is not based on a balanced panel. New countries are added to each of the income groups as their data becomes available and this may contribute to some of the fluctuations, especially since the total number of countries in the sample is not too large. The large dip in integration around the year 1998 in the low and middle income countries is due to the Asian crisis which saw the imposition of capital controls in some of these countries (most notably in Malaysia). The dip in 2001 is due to Turkey's financial crisis. Figure 2b shows the low and middle income countries' average integration excluding Malaysia, Thailand and Turkey. Noteworthy is the large dip in integration in 2008, corresponding to the recent financial crisis. Figure 2 also suggests that while the high income countries show a positive trend in integration on average, the same is not true for low and middle income countries. Figure 3 plots the integration index for each of the BRIC countries. An interesting result here is that India and Brazil reverse their relative standing in de-facto integration, with India everywhere more open than Brazil, whereas Brazil is more open than India in terms of Chinn-Ito measure of de-jure openness.

### 3 Determinants of Price Convergence

This section examines the determinants of de-facto integration as measured by price convergence. The emphasis is on the relationship between de-facto integration on the one hand and de-jure capital controls and competitiveness of domestic banking sector on the other. Greater domestic bank competitiveness is expected to lead to greater de-facto integration, for any given level of capital controls. The foreign interest rate is the interest rate that would prevail in the domestic economy in the absence of capital controls and monopolistic competition in the domestic economy. The greater the extent of monopoly power in the domestic market, the greater the disconnect between domestic and foreign interest rates, over and above that implied by the level of capital controls.

The relationship between de-facto integration and bank competitiveness is examined in a panel framework:

$$Index_{it} = \alpha + \beta X_{it} + \gamma t + \mu_i + \epsilon_{it} \quad (12)$$

where  $Index_{it}$  is the integration index for country  $i$  at time  $t$ ,  $X_{it}$  are a set of country characteristics detailed below,  $\mu_i$  denote country specific fixed effects and  $t$  is a time trend. The analysis is done first for the entire sample of countries and then separately for the two groups: (1) High Income and (2) Low and Middle Income countries. The reason for looking at separate samples is that the high income countries have very few capital controls and in the absence of market segmentation that these controls enable, the structure of the domestic banking sector should not matter for price convergence. The list of countries included in each group are indicated in Table 1.

For each sample group, panel heteroskedasticity and serial correlation tests were conducted (Table 5).<sup>10</sup> The null of heteroskedasticity was rejected in all samples. For the low and middle income countries sample, there was evidence of

---

<sup>10</sup>Panel heteroskedasticity tests were likelihood ratio tests that compared likelihood statistics from a GLS regression assuming panel specific heteroskedasticity with an unrestricted model. To test for serial correlation, Wooldridge (2002) test was applied using the `xtserial` command in Stata.



serial correlation in the errors in all specifications. Although the serial correlation did not always show up in the sample with all countries in the tests, perhaps because there is not sufficient evidence against lack of serial correlation in the high income group sample, the regressions for full sample correct for serial correlation. The serial correlation in low and middle income countries may simply reflect the fact that financial openness as well as other macroeconomic variables in these countries exhibit greater persistence. Accordingly, the regressions for low and middle income countries and for the full sample were estimated using a Prais-Winston procedure allowing for panel specific AR(1) correction.<sup>11</sup>

The explanatory variables,  $X_{it}$ , include measures of banking competitiveness, measures of legal restrictions to cross-border capital flows, macroeconomic variables and measures of transactions costs and liquidity in the interbank and foreign exchange markets. These are described in detail below.

### 3.1 Banking Competitiveness Measures

Four different proxies were used to measure domestic banking sector competitiveness: (1) the net interest margins, which equal the accounting value of banks' net interest revenue as a share of their total assets, (2) bank overhead costs to total assets ratio, (3) return on equity in the banking sector and (4) Herfindahl-Hirschman Index (HHI), defined as the sum of squares of market shares of total assets of the top 50 firms. This index was constructed using Bankscope data supplemented with information on total industry assets from Bank for International Settlements (BIS). Details of the data sources for each of these variables and of HHI construction are in the appendix.

A higher level of each of the banking sector competitiveness measure denotes greater monopoly power in domestic banking and therefore, as argued earlier,

---

<sup>11</sup>The Prais-Winston procedure is an FGLS procedure that uses as the initial value, the autocorrelation coefficient in the residuals from the first stage OLS regression to quasi-difference the data and estimate the model (and includes a correction for the first time period). The process is iterated until convergence of estimated autocorrelations. See Wooldridge (2006) for details.

should be associated with lower de-facto international integration. Neither of the four measures is a perfect measure of competitiveness. However, each of these has been used as proxy for the bank competitiveness in the literature. Banks with market power can charge higher rates on loans and pay lower rates on deposits (Berger and Hannan, 1989; Hannan 1991) implying that net interest margins would be higher in less competitive markets. Demirguc, Laeven and Levine (2003) find that regulatory restrictions on banking activity, including freedom of entry and lack of institutional development substantively increase net interest margins. They also find that the net interest margins increase with state control of the banking sector, and decline with development of the stock markets, which would compete with banks as a source of funding. Higher profits of a less competitive industry may be reflected in higher return on equity (ROE) or higher overhead costs (Berger and Hannan, 1998; Jayaratne and Strahan, 1998; Martinez Peria and Mody, 2004). The downside of these three measures is that they may also be influenced by country tax structures, quality of institutions, and bank risk preferences. The HHI ratio varies between 0 and 1 and in theory, is higher for less competitive systems. However, the HHI does not take into account the fact that banks may compete with other financial markets, nor that threat of entry matters for effective competition (Panzar and Rosse, 1987, Claessens and Laeven, 2004; Beck et. al, 2006).

In order to account for the competition banks may face from the stock market, I use a measure of equity market development, which is the first principal component of stock market capitalization ratio to GDP and stock market total value traded as ratio to GDP. The data are from World Bank's financial structure database (Beck et. al., 2006). I include equity market development alone as well as its interaction with HHI, to allow for non-linear effects.

### **3.2 Measure of De-jure Openness**

While the level of capital controls determines de-facto financial integration, market players often find ways to evade such controls, so the relation need not be

one-to-one. Moreover, even in the absence of capital controls, other imperfections - transactions and information costs, asymmetric information, imperfect competition etc - impinge on the price convergence with international markets, so that even in the absence of such controls, price convergence may not be perfect. Therefore, the coefficient on de-jure measure of openness is expected to be positive, but may be ‘small’. One measure of smallness of the coefficient would be that it is less than one in standardized terms. I use the Chinn-Ito measure of capital account openness (De-jure Openness), which takes higher values for fewer legal restrictions on capital flows across borders. This measure is commonly used in the literature as a measure of de-jure openness and is available for a large set of countries and time periods.<sup>12</sup>

### 3.3 Other Explanatory Variables

The degree of development of institutions in the country may influence the speed of arbitrage, particularly when arbitrage involves lending in the domestic currency. Better institutions imply a lower country risk. Bank competitiveness may itself be positively related to institutional development (Claessens and Laeven, 2004; Ito and Chinn, 2007). On the other hand, for any given level of capital controls, lower institutional development, for example, higher corruption, would allow easier evasion of the de-jure controls. For these reasons, the sign of an institutional variable (with higher values measuring better institutions) may be positive or negative. I include a measure of institutional development, which is the first principal component of corruption and law and order indices from PR Group’s International Country Risk Guide. Higher values of these variables reflect lower corruption or law and order.

As a proxy for transactions costs in currency markets, I compute the percentage bid-ask spread (as a percentage of the mean rate) in the spot exchange rate markets using daily data. An average of these for the year for each currency is

---

<sup>12</sup>Another widely used de-jure index is the Edwards(2004) index. However, the Edwards index is only available through 2004, leading to a serious loss of observations for developing economies.

included as an explanatory variable (Exchange Mkt Spread). One would expect higher average spreads to be associated with lower integration. Similar spreads on interbank interest rates were not available for most of the countries in the sample.

Volatility in the prices in a financial market may be used to proxy for the lack of liquidity in the market, as well as for the risk premia. I add to the regressions a measure of volatility each for the interbank market and for the foreign exchange market. Volatility in the interbank market is measured by the average (over the two maturities) of the coefficient of variation in the daily 1- and 3- month interbank interest rates (Interbank Mkt Volatility). Similarly, volatility in the forward exchange market is the average of the coefficient of variation over the year in the daily 1- and 3- month forward exchange rates (Exchange Mkt Volatility).

Crisis periods often see either new capital controls being imposed or renewed enforcement of existing regulations. Banking crisis periods, additionally, are periods of heightened counterparty risk and lower liquidity in interbank markets, and serve here to control for these risk premia. I include two dummy variables for crisis periods in the regressions, one for banking crisis and another for currency crisis. Currency Crisis dummy uses the Kaminsky and Reinhart (1999) index of currency market turbulence (a weighted average of exchange rate and reserve changes) to identify crisis months and takes the value 1 for years in which there was one or more crisis month. The Bank Crisis dummy variable takes the value 1 for years in which there was a systemic banking crisis and is taken from Laeven and Valencia (2008). Both kinds of crisis periods are therefore expected to be associated with lower price convergence.

Finally, a trend variable is included to test if the world has indeed become more globalized over time, GDP per capita in thousands of 2000 US dollars (real GDP per capita) to test if higher income countries are more integrated after controlling for their level of financial development, institutions etc, and the ratio of trade to GDP.<sup>13</sup> Greater trade integration should make it easier to

---

<sup>13</sup>Note that since the integration index is an average over normalized variables, it can

evade capital controls as over invoicing of imports and under invoicing of exports are popular ways of exporting capital in countries with controls (Aizenman 2008; Aizenman and Noy, 2009; Prasad and Rajan, 2008; Claessens and Naude, 1993).

### 3.4 Summary statistics for explanatory variables

Table 3 presents the summary statistics of each of the regressors for all countries and by income group. Several of the variables have different mean values by income group. Table 4 presents the results of difference in means tests for some variables of interest, by income group. High income countries have net interest margins and overhead costs that are significantly lower than low and middle income countries. Moreover, the correlation between net interest margins and overheads is 0.62, underscoring the validity of these two variables as proxies for lack of competitiveness in banking rather than for bank efficiency.

The return on equity is not significantly different between the two groups, and HHI in financial institution assets is actually significantly larger for high income countries than for low and middle income countries. This, combined with the significantly higher level of equity market development in the high income economies, suggests that HHI may not fully capture the competition faced by the banking sector. This observation is consistent with the results of Claessens and Laeven (2004) who create a measure of bank competitiveness based on contestability of the market and find that it is not negatively related to concentration.<sup>14</sup>

---

vary between  $(-\infty, \infty)$ . As the differentials for all countries become smaller, the standard deviation of each estimated component of the index becomes smaller, leading to larger values of the index.

<sup>14</sup>The concentration measure they use is narrower - it is the combined market share of the five largest banks.

## 4 Results on Determinants of International Financial Integration

### 4.1 Full Sample

The estimates from equation 12 are presented in Tables 6 to 11. Table 6 presents the results for the entire sample. De-jure financially open countries are also de-facto more integrated. The coefficient for de-jure integration is positive, significant and roughly the same size in all columns of Table 6. These results indicate that although capital controls do lead to lower price convergence, the relationship is far from one to one. A one standard deviation increase in de-jure openness is associated with a 0.21-0.24 standard deviation increase in de-facto integration, and vice versa.<sup>15</sup> This is consistent with the widely held view that market players find ways around controls and with other studies on the effectiveness of capital controls.<sup>16</sup>

Also negative in sign and significant are exchange market volatility, currency crisis dummy and exchange market spread, implying that thinner markets, periods with greater uncertainty and heightened liquidity or counterparty risk and higher transactions costs are associated with lower de-facto integration. There is a significant positive trend in integration, indicating that the recent wave of globalization has led to price convergence.

As far as the bank competition measures are concerned, only net interest margins and the interaction term between equity market development and the concentration measure, HHI, enter significantly. However, the results here may be driven by the relationships in high income countries, as roughly 73 percent of all observations in Table 6 belong to high income countries. While the impact of volatility or counterparty risk need not depend on the level of de-facto integration, domestic banking competitiveness matters for international integration

---

<sup>15</sup>Maximum and minimum values of the standardized coefficients for estimates in Tables 6 to 11 are in Table 13

<sup>16</sup>See, for example, Garber 1998, Garcia 2006 and Aizenman 2004 for studies on evasion of capital controls.

only in the presence of some segmentation between the domestic and foreign markets.

The significant and negative coefficient on Trade/GDP ratio is largely due to the fact that most countries that had currency crises in the sample were also more open to trade (and were richer). The crises periods typically involve a sharp decline in de-facto integration that outlasts the crisis period. Figure 2c shows this pattern in Malaysia, Thailand and Turkey. Table 12 lists the mean and range of Trade/GDP ratio and real GDP per capita for countries that had at least one currency crises during the sample period (except the 2008 crisis) and those that did not. Countries that had at least one crisis during the sample period had average trade/GDP ratio of 0.97 (median ratio of 0.74) whereas countries that did not have any currency crises had a lower average trade/GDP ratio of 0.90 (median ratio of 0.70). The crisis countries were also richer on average.

Further, if trade integration was negatively correlated with de-facto financial integration even in non-crisis periods, then the correlation between trade growth and financial integration should also be negative. Countries with faster trade integration should see their financial integration decline. However, such relationship is refuted by the data. Table 7 shows the regressions results for all countries when trade growth and GDP per capita growth are included as explanatory variables. The coefficient of trade growth is not significantly different from zero, and that of GDP growth is significant and positive. The standardized coefficients on de-jure openness are now lower, between 0.18-0.21 and those on bank competitiveness measures are larger.

## 4.2 Results by Income Group

The results on the high income group are presented in Table 8 and 9. In this group, the level of de-jure openness and the positive trend are practically the only consistently significant arguments. Both have a positive sign, indicating that the fewer the restrictions on flows, the higher the level of integration; and

that de-facto integration has increased over time. Given the high level of de-jure openness in these countries, and perhaps also the relatively similar underlying contracts, it is not surprising that most of the banking competitiveness variables are not significant. As discussed in the introduction, when there are no or few constraints on access to overseas financial markets, the level of domestic banking competition becomes irrelevant. The positive and significant coefficient on return on equity may only reflect greater efficiency in these markets. The  $R^2$  in the high-income country regressions are also quite low.

In contrast, the  $R^2$  for low and middle income country sample are very high, above 0.5 for each specification (Tables 10 and 11). The coefficient on de-jure openness is positive in all specifications, but not always significant. The point estimates of the standardized coefficient for de-jure openness vary from 0.09 to 0.22. All the banking sector competitiveness indicators have negative coefficients that are larger in magnitude than for the full sample. Net interest margins, overheads and return on equity are significant in both tables, while HHI is significant in three out of the four specifications in which it is included.

These results indicate that less competitive banking systems are in fact, associated with lower price convergence with the rest of the world. The standardized coefficient on net interest margin is -0.4 in Table 10. This value means that a one standard deviation decrease in net interest margin would lead to a rise in the integration index of .4 standard deviations.<sup>17</sup> As an example, if Argentina's net interest margins fell from 0.061 in 2005 to 0.020 which was roughly level of net interest margins in Hong Kong in the same year (a 1.6 standard deviation fall) other things being equal, its integration index would rise from -0.26 to 0.18, roughly the level for Spain in 2003. Moreover, the largest standardized coefficient on net interest margins in Tables 10 and 11 is about twice the absolute size of the largest point estimate for standardized coefficient on de-jure openness (0.22). The point estimate of standardized coefficients of overheads equal -0.10, that for return on equity lie between -0.17 to -0.19 and on HHI from -0.08 to

---

<sup>17</sup>In this section, all mean and standard deviations refer to their respective values in the regression sample.



-0.16.

The last columns of Tables 10 and 11 explore the interactions between the two variables in determining de-facto integration. The results indicate that both higher equity market development and more competitiveness in financial sector lead to greater de-facto international integration on average, though the impact is non-linear. Estimates in Table 10 indicate that at the mean value of HHI, a marginal increase in stock market development increases financial integration by a positive value (0.06) but in more competitive systems, the impact is larger. At mean values of stock market development, a marginal increase in concentration in the financial sector reduces de-facto integration by 1.74.

Currency crisis are associated with lower de-facto integration. The coefficient is always negative and significant. Greater volatility in the interbank and foreign exchange markets are associated with lower levels of de-facto integration, whereas financial development is associated with higher de-facto integration. However, these variables are not always significant De-jure restrictions matter, but the coefficients are smaller than for the high income country sample and not always significant.

### 4.3 Robustness Checks

The measures of banking competitiveness may be endogenous in the regressions. Therefore, I re-ran the regressions with lagged values of these variables for emerging and developing countries. The results are in Table 14. The main results are robust to using lagged values. The coefficients on net interest margins and HHI remain negative and significant. The coefficient on overheads is now significant (it is negative and higher in absolute value), but the reverse is true for return on equity. The coefficients on other variables remain about the same size and significance. The main results are also robust to including other potentially endogenous variables, i.e. volatility in interbank and exchange markets, the spread in exchange markets, financial development, GDP per capita and GDP growth, with one lag (Table 15).

## 5 Concluding Remarks

This paper extends a price based measure of financial integration to rank 54 countries over an average duration of 13 years per country. This index captures an important aspect of international financial integration - the degree to which interest rates are aligned with international markets - that has so far been missing in studies of the impact of financial integration on growth, macroeconomic volatility, as well as contagion. While there is a clear trend of increasing integration in the high income countries before the onset of current crisis, the same is not true for the developing countries.

Further, this paper makes a contribution to the literature on determinants of de-facto integration and looks at a previously ignored angle - the relationship between banking sector competitiveness and de-facto integration. Although none of the measures used are perfect, they all point to a strong link between bank competitiveness and price convergence in international markets for low and middle income countries. Schaeck et. al. (2006) find that more competitive banking systems are more stable and Fecht et. al. (2007) that greater international integration of interbank markets enhances resilience to idiosyncratic shocks.<sup>18</sup> The link between the two may be that more competitive systems are also more integrated with the rest of the world. This has several policy implications. The restrictions on international integration are not the sum total of controls on cross border transactions - domestic regulations also impinge on international integration. Liberalizing domestic financial sectors may provide all the benefits of more efficient domestic allocation of resources, but in addition would provide the benefits from greater international integration. Conversely, consolidation of the financial sector, that has occurred in some countries since the 2008 crisis, may lead to larger price differentials between these economies and the world markets.

The paper also finds that the for high income countries, domestic banking

---

<sup>18</sup>Although, as the 2007-08 crisis made clear, it may also increase vulnerability to systemic shocks.

sector competitiveness is not an important determinant of de-facto international integration. Other determinants of de-facto international integration also differ between developed and developing countries. Periods of volatility and currency crisis are periods of low price-integration for developing countries. Moreover, for this group, while the link between capital controls and price-convergence exists, it is less than perfect, providing evidence that capital controls do get evaded.

Data limitations do not allow us to explore fully the possible threshold effects. Increasing trade openness may increase convergence but only when the level of de-jure controls are high and when corruption is high, i.e. when there is an incentive to evade controls and a means to do so. The impact of tightening of capital controls on de-facto integration may also depend on the level of institutional development. These remain a topic for future research.

## References

- Viral V Acharya, Denis Gromb, and Tanju Yorulmazer. Imperfect competition in the inter-bank market for liquidity as a rationale for central banking. CEPR Discussion Papers 6984, C.E.P.R. Discussion Papers, Oct 2008.
- Joshua Aizenman. Financial opening and development: Evidence and policy controversies. *American Economic Review Papers and Proceedings*, pages 65–70, 2004.
- Joshua Aizenman. On the hidden links between financial and trade opening. *Journal of International Money and Finance*, 27:372–86, 2008.
- Joshua Aizenman and Ilan Noy. Endogenous financial and trade openness. *Review of Development Economics*, 13(2):175–189, 05 2009.
- Franklin Allen and Douglas Gale. Competition and financial stability. *Journal of Money, Credit and Banking*, 36(3):453–480, 2004.
- Lieven Baele, Annalisa Ferrando, Peter Hordahl, Krylova, and Cyril Monnet.

Measuring financial integration in the euro area. Occasional Paper Series 14, European Central Bank, 2004.

Thorsten Beck, Asli Demirguc-Kunt, and Vojislav Maksimovic. Bank competition and access to finance: International evidence. *Journal of Money, Credit and Banking*, 36(3):627–48, June 2004.

Allen N. Berger and Timothy H. Hannan. The efficiency cost of market power in the banking industry: A test of the quiet life and related hypotheses. *The Review of Economics and Statistics*, 80(3):454–465, August 1998.

Tim Bollerslev and Michael Melvin. Bid–ask spreads and volatility in the foreign exchange market : An empirical analysis. *Journal of International Economics*, 36(3-4):355 – 372, 1994. ISSN 0022-1996.

John H. Boyd and Gianni De Nicola. The theory of bank risk taking and competition revisited. *Journal of Finance*, 60(3):1329–1343, 06 2005.

Elena Carletti, Philipp Hartmann, and Giancarlo Spagnolo. Bank mergers, competition, and liquidity. *Journal of Money, Credit and Banking*, 39(5): 1067–1105, 08 2007.

Nicola Cetorelli. Banking market structure, financial dependence and growth: International evidence from industry data. *Journal of Finance*, 56(2):617–648, 04 2001.

Ai-Ru Cheng and Yin-Wong Cheung. Return, trading volume, and market depth in currency futures markets. Working Papers 202008, Hong Kong Institute for Monetary Research, October 2008. URL <http://ideas.repec.org/p/hkm/wpaper/202008.html>.

Yin-Wong Cheung and Menzie David Chinn. Currency traders and exchange rate dynamics: a survey of the us market. *Journal of International Money and Finance*, 20(4):439–471, August 2001.

- Yin-Wong Cheung, Matthew S. Yiu, and Kenneth K. Chow. A factor analysis of trade integration: The case of asian and oceanic economies. Working Papers 132009, Hong Kong Institute for Monetary Research, March 2009. URL <http://ideas.repec.org/p/hkm/wpaper/132009.html>.
- Stijn Claessens and Luc Laeven. What drives bank competition? some international evidence. *Journal of Money, Credit and Banking*, 36(3):563–83, June 2004.
- Stijn Claessens and Luc Laeven. Financial dependence, banking sector competition, and economic growth. *Journal of the European Economic Association*, 3(1):179–207, 03 2005.
- Stijn Claessens and David Naude. Recent estimates of capital flight. Policy Research Working Paper Series 1186, The World Bank, Sep 1993.
- Luca Deidda and Bassam Fattouh. Concentration in the banking industry and economic growth. *Macroeconomic Dynamics*, 9(02):198–219, April 2005.
- Asli Demirguc-Kunt, Luc Laeven, and Ross Levine. Regulations, market structure, institutions, and the cost of financial intermediation. *Journal of Money, Credit and Banking*, 36(3):593–622, June 2004.
- Falko Fecht, Hans Peter Grner, and Philipp Hartmann. Financial integration, specialization and systemic risk. Discussion Paper Series 1: Economic Studies 2008,23, Deutsche Bundesbank, Research Centre, 2008.
- Wai-Ming Fong, Giorgio Valente, and Joseph K.W. Fung. Fx arbitrage and market liquidity: Statistical significance and economic value. Working Papers 082008, Hong Kong Institute for Monetary Research, April 2008. URL <http://ideas.repec.org/p/hkm/wpaper/082008.html>.
- Xavier Freixas and Cornelia Holthausen. Interbank market integration under asymmetric information. *The Review of Financial Studies*, 18(2):459–490, 2005.

- J. A. Frenkel and R. M. Levich. Covered interest arbitrage: Unexploited profits? *Journal Of Political Economy*, 83:325–38, 1975.
- P. M. Garber. Buttressing capital account liberalization with prudential regulation and foreign entry. *Essays in International Finance*, 207, 1998.
- M. G.P. Garcia and B. S.M. Carvalho. Ineffective controls on capital inflows under sophisticated financial markets: Brazil in the nineties. Textos para discussão 516, Department of Economics PUC-Rio (Brazil), 2006.
- Timothy H. Hannan. The functional relationship between prices and market concentration: The case of the banking industry. Finance and Economics Discussion Series 169, Board of Governors of the Federal Reserve System (U.S.), 1991.
- Timothy H. Hannan and Allen N. Berger. Price rigidity and market structure: Theory and evidence from the banking industry. Finance and Economics Discussion Series 59, Board of Governors of the Federal Reserve System (U.S.), 1989.
- Bruce E. Hansen. Threshold effects in non-dynamic panels: Estimation, testing, and inference. *Journal of Econometrics*, 93(2):345 – 368, 1999. ISSN 0304-4076.
- Philipp Hartmann and Elena Carletti. Competition and stability: What’s special about banking? Working Paper Series 146, European Central Bank, May 2002.
- Cornelia Holthausen and Xavier Freixas. Interbank market integration under asymmetric information. Working Paper Series 074, European Central Bank, Aug 2001.
- Hiro Ito and Menzie Chinn. Price-based measurement of financial globalization: A cross-country study of interest rate parity. *Pacific Economic Review*, 12 (4):419–444, October 2007.

- Jith Jayaratne and Philip E. Strahan. Entry restrictions, industry evolution, and dynamic efficiency: Evidence from commercial banking. *Journal of Law and Economics*, 41(1):239–73, April 1998.
- G. L. Kaminsky and C. Reinhart. The twin crises: The causes of balance of payments problems. *The American Economic Review*, 3:473–500, 1999.
- Tarron Khemraj and Sukrishnalall Pasha. Foreign exchange market bid-ask spread and market power in an underdeveloped economy. MPRA Paper 11422, University Library of Munich, Germany, Oct 2008.
- M Ayhan Kose, Eswar Prasad, Kenneth Rogoff, and Shang-Jin Wei. Financial globalization: A reappraisal. *IMF Staff Papers*, 56(1):8–62, April 2009.
- Luc Laeven and Fabian Valencia. Systemic banking crises: A new database. IMF Working Papers 08/224, International Monetary Fund, Sep 2008.
- Eduardo Levy Yeyati, Sergio L. Schmukler, and Neeltje Van Horen. International financial integration through the law of one price: The role of liquidity and capital controls. *Journal of Financial Intermediation*, 18(3):432–463, July 2009.
- Maria Soledad Martinez Peria and Ashoka Mody. How foreign participation and market concentration impact bank spreads: Evidence from latin america. *Journal of Money, Credit and Banking*, 36(3):511–37, June 2004.
- Gianni De Nicola, John H. Boyd, and Abu M. Jalal. Bank risk-taking and competition revisited: New theory and new evidence. IMF Working Papers 06/297, International Monetary Fund, Jan 2007.
- J. Panzar and J. Rosse. Testing for monopoly equilibrium. *Journal of Industrial Economics*, 35:443–456, 1987.
- Gurnain K. Pasricha. Financial integration in emerging market economies. Working Paper 641, Department of Economics, University of California at Santa Cruz, 2008a.

Gurnain K. Pasricha. Imperfect competition in financial markets and capital controls: A model and a test. MPRA Paper 12125, University Library of Munich, Germany, Dec 2008b.

Eswar S. Prasad and Raghuram G. Rajan. A pragmatic approach to capital account liberalization. *Journal of Economic Perspectives*, 22(3):149–72, Summer 2008.

Klaus Schaeck, Martin Eihak, and Simon Wolfe. Are more competitive banking systems more stable? Working Paper 143, International Monetary Fund, 2006.



Table 1. Integration Index Availability

| Market                       | N  | Begin Year | End Year |
|------------------------------|----|------------|----------|
| <i>High Income</i>           |    |            |          |
| Australia                    | 23 | 1986       | 2008     |
| Austria                      | 20 | 1989       | 2008     |
| Belgium                      | 19 | 1990       | 2008     |
| Canada                       | 24 | 1985       | 2008     |
| Czech Republic               | 12 | 1997       | 2008     |
| Denmark                      | 21 | 1988       | 2008     |
| Estonia                      | 10 | 1999       | 2008     |
| Finland                      | 17 | 1992       | 2008     |
| France                       | 20 | 1989       | 2008     |
| Germany                      | 18 | 1991       | 2008     |
| Greece                       | 12 | 1997       | 2008     |
| Hong Kong                    | 23 | 1986       | 2008     |
| Iceland                      | 5  | 2004       | 2008     |
| Ireland                      | 20 | 1989       | 2008     |
| Israel                       | 8  | 2001       | 2008     |
| Italy                        | 18 | 1991       | 2008     |
| Japan                        | 13 | 1996       | 2008     |
| Kuwait                       | 7  | 2002       | 2008     |
| Netherlands                  | 20 | 1989       | 2008     |
| New Zealand                  | 23 | 1986       | 2008     |
| Norway                       | 23 | 1986       | 2008     |
| Portugal                     | 16 | 1993       | 2008     |
| Saudi Arabia                 | 7  | 2002       | 2008     |
| Singapore                    | 23 | 1986       | 2008     |
| Slovenia                     | 5  | 2004       | 2008     |
| Spain                        | 20 | 1989       | 2008     |
| Sweden                       | 22 | 1987       | 2008     |
| Switzerland                  | 25 | 1984       | 2008     |
| United Arab Emirates         | 2  | 2007       | 2008     |
| United Kingdom               | 25 | 1984       | 2008     |
| <i>Low and Middle Income</i> |    |            |          |
| Argentina                    | 5  | 2004       | 2008     |
| Brazil                       | 6  | 2003       | 2008     |
| Bulgaria                     | 5  | 2004       | 2008     |
| Chile                        | 7  | 2002       | 2008     |
| China                        | 7  | 2002       | 2008     |
| Colombia                     | 5  | 2004       | 2008     |
| Croatia                      | 6  | 2003       | 2008     |
| Hungary                      | 11 | 1998       | 2008     |
| India                        | 10 | 1999       | 2008     |

Table 1 (cont'd)

| Market             | N   | Begin Year | End Year |
|--------------------|-----|------------|----------|
| Indonesia          | 9   | 2000       | 2008     |
| Kazakhstan         | 5   | 2004       | 2008     |
| Latvia             | 8   | 2001       | 2008     |
| Lithuania          | 9   | 2000       | 2008     |
| Malaysia           | 19  | 1990       | 2008     |
| Mexico             | 12  | 1997       | 2008     |
| Pakistan           | 5   | 2004       | 2008     |
| Philippines        | 12  | 1997       | 2008     |
| Poland             | 10  | 1999       | 2008     |
| Romania            | 5   | 2004       | 2008     |
| Russian Federation | 5   | 2004       | 2008     |
| Slovakia           | 7   | 2002       | 2008     |
| South Africa       | 12  | 1997       | 2008     |
| Thailand           | 13  | 1996       | 2008     |
| Turkey             | 10  | 1999       | 2008     |
| Total              | 704 | 1984       | 2008     |

Note. — N is the total number of observations.

Table 2. International Integration Index: Summary Statistics

|                                 | N   | Mean  | Std.Dev | Max  | Min   | CV    |
|---------------------------------|-----|-------|---------|------|-------|-------|
| All Countries                   | 704 | 0.00  | 0.48    | 0.54 | -4.88 | ..    |
| High Income Countries           | 519 | 0.06  | 0.33    | 0.54 | -2.20 | 5.32  |
| Low and Middle Income Countries | 185 | -0.18 | 0.73    | 0.50 | -4.88 | -4.11 |

Note. — N is the total number of observations, Std.Dev is the standard deviation of each variable, Max is the maximum value, Min is the minimum value, and CV is the coefficient of variation.

Table 3. Summary Statistics

|  | N   | Mean  | Std.Dev | Max   | Min   | CV    |
|--|-----|-------|---------|-------|-------|-------|
| De-Jure Openness                       | 637 | 1.68  | 1.18    | 2.53  | -1.13 | 0.70  |
| Interbank Mkt Volatility               | 704 | 0.12  | 0.11    | 0.99  | 0.00  | 0.88  |
| Exchange Mkt Volatility                | 704 | 0.04  | 0.03    | 0.43  | 0.00  | 0.73  |
| Exchange Mkt Spread                    | 648 | 0.06  | 0.09    | 0.66  | 0.00  | 1.42  |
| Institutions                           | 704 | 0.00  | 1.31    | 1.63  | -3.26 | ..    |
| Trade                                  | 681 | 0.93  | 0.66    | 4.57  | 0.19  | 0.71  |
| real GDP per capita                    | 702 | 16.45 | 10.63   | 42.43 | 0.44  | 0.65  |
| Overheads                              | 593 | 0.03  | 0.02    | 0.12  | 0.00  | 0.55  |
| Net Interest Margins                   | 593 | 0.03  | 0.02    | 0.18  | 0.01  | 0.60  |
| HHI                                    | 556 | 0.16  | 0.13    | 0.90  | 0.00  | 0.85  |
| ROE                                    | 585 | 0.09  | 0.14    | 1.03  | -1.44 | 1.59  |
| Equity Mkt Development                 | 607 | 0.00  | 1.33    | 8.52  | -1.27 |       |
| <i>High Income Countries</i>           |     |       |         |       |       |       |
| De-Jure Openness                       | 474 | 2.14  | 0.69    | 2.53  | -1.13 | 0.32  |
| Interbank Mkt Volatility               | 519 | 0.12  | 0.11    | 0.99  | 0.00  | 0.94  |
| Exchange Mkt Volatility                | 519 | 0.04  | 0.02    | 0.22  | 0.00  | 0.56  |
| Exchange Mkt Spread                    | 490 | 0.05  | 0.07    | 0.66  | 0.00  | 1.38  |
| Institutions                           | 519 | 0.57  | 0.91    | 1.63  | -1.91 | 1.59  |
| Trade                                  | 497 | 0.96  | 0.72    | 4.57  | 0.19  | 0.75  |
| real GDP per capita                    | 517 | 21.11 | 8.33    | 42.43 | 3.75  | 0.39  |
| Overheads                              | 433 | 0.03  | 0.02    | 0.12  | 0.00  | 0.52  |
| Net Interest Margins                   | 433 | 0.03  | 0.01    | 0.08  | 0.01  | 0.39  |
| HHI                                    | 389 | 0.18  | 0.15    | 0.90  | 0.00  | 0.85  |
| ROE                                    | 425 | 0.09  | 0.10    | 1.03  | -0.50 | 1.19  |
| Equity Mkt Development                 | 444 | 0.14  | 1.41    | 8.52  | -1.27 | 10.44 |
| <i>Low and Middle Income Countries</i> |     |       |         |       |       |       |
| De-Jure Openness                       | 163 | 0.33  | 1.26    | 2.53  | -1.13 | 3.82  |
| Interbank Mkt Volatility               | 185 | 0.13  | 0.09    | 0.46  | 0.00  | 0.71  |
| Exchange Mkt Volatility                | 185 | 0.04  | 0.04    | 0.43  | 0.00  | 0.99  |
| Exchange Mkt Spread                    | 158 | 0.09  | 0.12    | 0.66  | 0.00  | 1.29  |
| Institutions                           | 185 | -1.61 | 0.81    | 0.28  | -3.26 | -0.50 |
| Trade                                  | 184 | 0.85  | 0.46    | 2.20  | 0.25  | 0.55  |
| real GDP per capita                    | 185 | 3.43  | 1.99    | 9.89  | 0.44  | 0.58  |
| Overheads                              | 160 | 0.04  | 0.02    | 0.12  | 0.01  | 0.52  |
| Net Interest Margins                   | 160 | 0.05  | 0.03    | 0.18  | 0.01  | 0.56  |
| HHI                                    | 167 | 0.11  | 0.07    | 0.37  | 0.00  | 0.59  |
| ROE                                    | 160 | 0.08  | 0.21    | 1.01  | -1.44 | 2.46  |
| Equity Mkt Development                 | 163 | -0.37 | 0.97    | 3.51  | -1.26 | -2.64 |

Note. — GDP per capita is in thousands of 2000 US dollars. N is the total number of observations, Std.Dev is the standard deviation of each variable, Max is the maximum value, Min is the minimum value, and CV is the coefficient of variation.

Table 4. Difference in Means Tests

|                           | T-Statistic | P-Value | Total Observations |
|---------------------------|-------------|---------|--------------------|
| Net Interest Margin       | 10.28       | 0.00    | 593                |
| Overheads                 | 6.21        | 0.00    | 593                |
| Return on Equity          | -0.29       | 0.77    | 585                |
| HHI                       | -6.75       | 0.00    | 556                |
| Financial Development     | -4.97       | 0.00    | 607                |
| Institutions              | -30.51      | 0.00    | 704                |
| De-jure Openness          | -17.43      | 0.00    | 637                |
| Interbank Rate Volatility | 1.35        | 0.18    | 704                |

Note. — The t-test is performed assuming unequal variances between samples. The p-values refer to a two-tailed test, of the null hypothesis that the mean of the relevant variable is same between high income and low and middle income group, against the alternative that the two means differ.

Table 5: Heteroskedasticity and Serial Correlation Tests

| Model with  | All Countries    | High Income      | Low and Middle Income |
|---|------------------|------------------|-----------------------|
| LR Test for Heteroskedasticity                                    |                  |                  |                       |
| $\chi^2$ - Statistics (p-values) for H0: Panel Heteroskedasticity |                  |                  |                       |
| Net Interest Margin   | 507.29<br>(0.00) | 312.20<br>(0.00) | 122.45<br>(0.00)      |
| Overheads   | 516.96<br>(0.00) | 310.05<br>(0.00) | 128.73<br>(0.00)      |
| Return on Equity  | 496.39<br>(0.00) | 293.67<br>(0.00) | 131.63<br>(0.00)      |
| HHI   | 522.22<br>(0.00) | 288.33<br>(0.00) | 123.56<br>(0.00)      |
| Equity Mkt Devpt*HHI  | 520.62<br>(0.00) | 287.07<br>(0.00) | 123.33<br>(0.00)      |
| Wooldridge (2002) Test for Autocorrelation in Panel Data          |                  |                  |                       |
| F-Statistics (p-values) for H0: No first order autocorrelation    |                  |                  |                       |
| Net Interest Margin   | 3.31<br>(0.08)   | 1.07<br>(0.31)   | 8.94<br>(0.01)        |
| Overheads   | 3.34<br>(0.07)   | 1.07<br>(0.31)   | 6.84<br>(0.02)        |
| Return on Equity  | 3.34<br>(0.07)   | 1.02<br>(0.32)   | 6.37<br>(0.02)        |
| HHI   | 1.79<br>(0.19)   | 0.08<br>(0.77)   | 6.63<br>(0.02)        |
| Equity Mkt Devpt*HHI  | 1.75<br>(0.19)   | 0.09<br>(0.77)   | 5.89<br>(0.03)        |

Table 6. Explaining De-facto Integration, I

|                          | 1                  | 2                  | 3                  | 4                  | 5                  |
|--------------------------|--------------------|--------------------|--------------------|--------------------|--------------------|
| De-Jure Openness         | 0.09***<br>(0.03)  | 0.09***<br>(0.03)  | 0.09***<br>(0.02)  | 0.09***<br>(0.03)  | 0.08***<br>(0.03)  |
| Interbank Mkt Volatility | -0.10<br>(0.13)    | -0.12<br>(0.13)    | -0.13<br>(0.13)    | -0.15<br>(0.12)    | -0.15<br>(0.12)    |
| Exchange Mkt Volatility  | -4.13***<br>(1.18) | -4.96***<br>(1.18) | -4.98***<br>(1.17) | -5.04***<br>(1.20) | -5.06***<br>(1.20) |
| Exchange Mkt Spread      | -0.58<br>(0.37)    | -0.67*<br>(0.37)   | -0.66*<br>(0.38)   | -0.68*<br>(0.36)   | -0.65*<br>(0.35)   |
| Bank Crisis Dummy        | -0.12<br>(0.09)    | -0.12<br>(0.09)    | -0.13<br>(0.09)    | -0.17<br>(0.11)    | -0.17<br>(0.11)    |
| Crisis Dummy             | -0.27***<br>(0.08) | -0.27***<br>(0.08) | -0.27***<br>(0.08) | -0.31**<br>(0.13)  | -0.31**<br>(0.13)  |
| Trend                    | 0.02***<br>(0.01)  | 0.02***<br>(0.01)  | 0.02***<br>(0.01)  | 0.02***<br>(0.01)  | 0.02***<br>(0.01)  |
| Institutions             | 0.03<br>(0.04)     | 0.05<br>(0.04)     | 0.05<br>(0.04)     | 0.04<br>(0.04)     | 0.04<br>(0.03)     |
| Equity Mkt Development   | 0.00<br>(0.02)     | -0.00<br>(0.02)    | 0.00<br>(0.02)     | -0.00<br>(0.02)    | 0.03<br>(0.03)     |
| Trade/GDP                | -0.08**<br>(0.04)  | -0.07*<br>(0.04)   | -0.07*<br>(0.04)   | -0.06*<br>(0.04)   | -0.07*<br>(0.03)   |
| real GDP per capita      | -0.00<br>(0.00)    | -0.00<br>(0.00)    | -0.00<br>(0.00)    | -0.00<br>(0.00)    | 0.00<br>(0.00)     |
| Net Interest Margin      | -3.98***<br>(1.19) |                    |                    |                    |                    |
| Overheads                |                    | -0.35<br>(0.74)    |                    |                    |                    |
| Return on Equity         |                    |                    | -0.05<br>(0.20)    |                    |                    |
| HHI                      |                    |                    |                    | 0.06<br>(0.10)     | 0.04<br>(0.08)     |
| EquityMktDevpt*HHI       |                    |                    |                    |                    | -0.19**<br>(0.09)  |
| Constant                 | -0.09<br>(0.15)    | -0.23*<br>(0.14)   | -0.22<br>(0.14)    | -0.22<br>(0.16)    | -0.21<br>(0.16)    |
| Observations             | 526                | 526                | 516                | 469                | 469                |
| R-squared                | 0.27               | 0.27               | 0.27               | 0.29               | 0.29               |
| Number of Countries      | 52                 | 52                 | 52                 | 49                 | 49                 |

Note. — Regressions use Prais-Winston 2SLS procedure with panel specific AR(1) error processes. Standard errors in parentheses.\*  $p < 0.1$ , \*\*  $p < 0.05$ , \*\*\*  $p < 0.01$ .

Table 7. Explaining De-facto Integration, II

|                          | 1                  | 2                  | 3                  | 4                  | 5                  |
|--------------------------|--------------------|--------------------|--------------------|--------------------|--------------------|
| De-Jure Openness         | 0.07**<br>(0.03)   | 0.08***<br>(0.03)  | 0.07**<br>(0.03)   | 0.07**<br>(0.03)   | 0.07**<br>(0.03)   |
| Interbank Mkt Volatility | -0.08<br>(0.14)    | -0.11<br>(0.14)    | -0.12<br>(0.14)    | -0.09<br>(0.13)    | -0.08<br>(0.13)    |
| Exchange Mkt Volatility  | -3.62***<br>(1.20) | -4.30***<br>(1.18) | -4.26***<br>(1.16) | -4.05***<br>(1.19) | -4.16***<br>(1.20) |
| Exchange Mkt Spread      | -0.67*<br>(0.38)   | -0.75*<br>(0.40)   | -0.72*<br>(0.42)   | -0.81**<br>(0.38)  | -0.77**<br>(0.37)  |
| Bank Crisis Dummy        | -0.10<br>(0.09)    | -0.10<br>(0.09)    | -0.12<br>(0.09)    | -0.10<br>(0.10)    | -0.12<br>(0.10)    |
| Crisis Dummy             | -0.22***<br>(0.08) | -0.22***<br>(0.08) | -0.22***<br>(0.08) | -0.31***<br>(0.12) | -0.30***<br>(0.11) |
| Trend                    | 0.02***<br>(0.01)  | 0.02***<br>(0.01)  | 0.02***<br>(0.01)  | 0.02***<br>(0.01)  | 0.02***<br>(0.01)  |
| Institutions             | 0.04<br>(0.04)     | 0.05<br>(0.04)     | 0.05<br>(0.04)     | 0.04<br>(0.04)     | 0.04<br>(0.04)     |
| Equity Mkt Development   | -0.00<br>(0.02)    | -0.00<br>(0.02)    | 0.00<br>(0.02)     | -0.01<br>(0.02)    | 0.02<br>(0.03)     |
| Trade Growth             | 0.00<br>(0.23)     | -0.00<br>(0.24)    | -0.00<br>(0.23)    | -0.13<br>(0.25)    | -0.10<br>(0.25)    |
| GDP per capita growth    | 0.03***<br>(0.01)  | 0.03***<br>(0.01)  | 0.04***<br>(0.01)  | 0.05***<br>(0.01)  | 0.04***<br>(0.01)  |
| Trade/GDP                | -0.10***<br>(0.04) | -0.09***<br>(0.03) | -0.10***<br>(0.04) | -0.09***<br>(0.03) | -0.09***<br>(0.03) |
| real GDP per capita      | 0.00<br>(0.00)     | 0.00<br>(0.00)     | 0.00<br>(0.00)     | 0.00<br>(0.00)     | 0.00<br>(0.00)     |
| Net Interest Margin      | -3.37***<br>(1.28) |                    |                    |                    |                    |
| Overheads                |                    | 0.71<br>(0.86)     |                    |                    |                    |
| Return on Equity         |                    |                    | -0.15<br>(0.19)    |                    |                    |
| HHI                      |                    |                    |                    | -0.17<br>(0.11)    | -0.08<br>(0.09)    |
| EquityMktDevpt*HHI       |                    |                    |                    |                    | -0.18**<br>(0.09)  |
| Constant                 | -0.21<br>(0.15)    | -0.36***<br>(0.14) | -0.32**<br>(0.14)  | -0.40**<br>(0.16)  | -0.38**<br>(0.16)  |
| Observations             | 496                | 496                | 486                | 446                | 446                |
| R-squared                | 0.30               | 0.29               | 0.29               | 0.32               | 0.32               |
| Number of Countries      | 52                 | 52                 | 52                 | 49                 | 49                 |

Note. — Regressions use Prais-Winston 2SLS procedure with panel specific AR(1) error processes. Standard errors in parentheses.\*  $p < 0.1$ , \*\*  $p < 0.05$ , \*\*\*  $p < 0.01$ .



Table 8. Explaining De-facto Integration: High Income Countries, I

|                          | 1                 | 2                 | 3                 | 4                 | 5                 |
|--------------------------|-------------------|-------------------|-------------------|-------------------|-------------------|
| De-Jure Openness         | 0.20***<br>(0.04) | 0.20***<br>(0.04) | 0.19***<br>(0.04) | 0.24***<br>(0.05) | 0.24***<br>(0.05) |
| Interbank Mkt Volatility | 0.10<br>(0.15)    | 0.10<br>(0.15)    | 0.13<br>(0.16)    | 0.04<br>(0.15)    | 0.04<br>(0.15)    |
| Exchange Mkt Volatility  | 1.23<br>(1.22)    | 1.21<br>(1.22)    | 2.14<br>(1.30)    | 1.01<br>(1.30)    | 1.01<br>(1.30)    |
| Exchange Mkt Spread      | -0.25<br>(0.72)   | -0.26<br>(0.72)   | -0.24<br>(0.74)   | 0.11<br>(0.74)    | 0.11<br>(0.75)    |
| Bank Crisis Dummy        | -0.13*<br>(0.07)  | -0.13*<br>(0.07)  | -0.12*<br>(0.07)  | -0.10<br>(0.09)   | -0.10<br>(0.09)   |
| Crisis Dummy             | -0.12<br>(0.08)   | -0.12<br>(0.08)   | -0.13*<br>(0.08)  | 0.07<br>(0.11)    | 0.07<br>(0.11)    |
| Trend                    | 0.03***<br>(0.01) | 0.03***<br>(0.01) | 0.04***<br>(0.01) | 0.03***<br>(0.01) | 0.03***<br>(0.01) |
| Institutions             | 0.05<br>(0.04)    | 0.05<br>(0.04)    | 0.05<br>(0.04)    | 0.04<br>(0.05)    | 0.04<br>(0.05)    |
| Equity Mkt Development   | -0.04<br>(0.03)   | -0.04<br>(0.03)   | -0.04<br>(0.03)   | -0.03<br>(0.03)   | -0.03<br>(0.04)   |
| Trade/GDP                | 0.15<br>(0.13)    | 0.17<br>(0.13)    | 0.15<br>(0.13)    | 0.15<br>(0.13)    | 0.15<br>(0.13)    |
| real GDP per capita      | -0.03**<br>(0.01) | -0.03**<br>(0.01) | -0.03**<br>(0.02) | -0.03<br>(0.02)   | -0.03<br>(0.02)   |
| Net Interest Margin      | 0.90<br>(2.42)    |                   |                   |                   |                   |
| Overheads                |                   | 1.03<br>(1.24)    |                   |                   |                   |
| Return on Equity         |                   |                   | 0.30<br>(0.20)    |                   |                   |
| HHI                      |                   |                   |                   | -0.12<br>(0.23)   | -0.12<br>(0.23)   |
| EquityMktDevpt*HHI       |                   |                   |                   |                   | 0.01<br>(0.13)    |
| Constant                 | -0.51*<br>(0.26)  | -0.53**<br>(0.26) | -0.47*<br>(0.26)  | -0.60**<br>(0.28) | -0.60**<br>(0.28) |
| Observations             | 390               | 390               | 380               | 345               | 345               |
| R-squared                | 0.23              | 0.23              | 0.24              | 0.17              | 0.17              |
| Number of coden          | 30                | 30                | 30                | 29                | 29                |

Note. — Regressions use fixed effects estimators. Standard errors in parentheses.\*  $p < 0.1$ , \*\*  $p < 0.05$ , \*\*\*  $p < 0.01$ .

Table 9. Explaining De-facto Integration: High Income Countries, II

|                          | 1                 | 2                 | 3                 | 4                 | 5                 |
|--------------------------|-------------------|-------------------|-------------------|-------------------|-------------------|
| De-Jure Openness         | 0.21***<br>(0.04) | 0.21***<br>(0.04) | 0.20***<br>(0.04) | 0.22***<br>(0.05) | 0.22***<br>(0.05) |
| Interbank Mkt Volatility | 0.11<br>(0.16)    | 0.11<br>(0.16)    | 0.14<br>(0.16)    | 0.05<br>(0.16)    | 0.05<br>(0.16)    |
| Exchange Mkt Volatility  | 1.57<br>(1.23)    | 1.55<br>(1.23)    | 2.49*<br>(1.32)   | 1.26<br>(1.31)    | 1.26<br>(1.32)    |
| Exchange Mkt Spread      | -0.57<br>(0.74)   | -0.60<br>(0.74)   | -0.52<br>(0.76)   | -0.17<br>(0.77)   | -0.18<br>(0.78)   |
| Bank Crisis Dummy        | -0.13*<br>(0.07)  | -0.13*<br>(0.07)  | -0.13*<br>(0.07)  | -0.06<br>(0.09)   | -0.06<br>(0.09)   |
| Crisis Dummy             | -0.09<br>(0.08)   | -0.09<br>(0.08)   | -0.10<br>(0.08)   | 0.05<br>(0.11)    | 0.05<br>(0.11)    |
| Trend                    | 0.04***<br>(0.01) | 0.04***<br>(0.01) | 0.04***<br>(0.01) | 0.04***<br>(0.01) | 0.04***<br>(0.01) |
| Institutions             | 0.06<br>(0.05)    | 0.06<br>(0.05)    | 0.06<br>(0.05)    | 0.05<br>(0.05)    | 0.05<br>(0.05)    |
| Equity Mkt Development   | -0.04<br>(0.03)   | -0.04<br>(0.03)   | -0.04<br>(0.03)   | -0.04<br>(0.03)   | -0.04<br>(0.04)   |
| Trade Growth             | -0.10<br>(0.19)   | -0.08<br>(0.20)   | -0.13<br>(0.20)   | -0.28<br>(0.20)   | -0.27<br>(0.20)   |
| GDP per capita growth    | 0.01<br>(0.01)    | 0.01<br>(0.01)    | 0.01<br>(0.01)    | 0.01<br>(0.01)    | 0.01<br>(0.01)    |
| Trade/GDP                | 0.14<br>(0.14)    | 0.16<br>(0.14)    | 0.16<br>(0.14)    | 0.14<br>(0.14)    | 0.14<br>(0.14)    |
| real GDP per capita      | -0.04**<br>(0.02) | -0.04**<br>(0.02) | -0.04**<br>(0.02) | -0.03*<br>(0.02)  | -0.03*<br>(0.02)  |
| Net Interest Margin      | 0.47<br>(2.45)    |                   |                   |                   |                   |
| Overheads                |                   | 0.96<br>(1.25)    |                   |                   |                   |
| Return on Equity         |                   |                   | 0.26<br>(0.20)    |                   |                   |
| HHI                      |                   |                   |                   | -0.11<br>(0.23)   | -0.11<br>(0.23)   |
| EquityMktDevpt*HHI       |                   |                   |                   |                   | -0.01<br>(0.13)   |
| Constant                 | -0.47*<br>(0.27)  | -0.49*<br>(0.27)  | -0.44<br>(0.27)   | -0.60**<br>(0.29) | -0.59**<br>(0.29) |
| Observations             | 376               | 376               | 366               | 336               | 336               |
| R-squared                | 0.23              | 0.23              | 0.23              | 0.16              | 0.16              |
| Number of coden          | 30                | 30                | 30                | 29                | 29                |

Note. — Regressions use fixed effects estimators. Standard errors in parentheses.\*  $p < 0.1$ , \*\*  $p < 0.05$ , \*\*\*  $p < 0.01$ .

Table 10. Explaining De-facto Integration: Low and Middle Income Countries, I

|                          | 1                   | 2                  | 3                  | 4                  | 5                  |
|--------------------------|---------------------|--------------------|--------------------|--------------------|--------------------|
| De-Jure Openness         | 0.11***<br>(0.04)   | 0.10**<br>(0.04)   | 0.08**<br>(0.04)   | 0.09*<br>(0.05)    | 0.06<br>(0.05)     |
| Interbank Mkt Volatility | -1.20**<br>(0.52)   | -1.04**<br>(0.49)  | -1.04**<br>(0.47)  | -0.94*<br>(0.52)   | -0.76<br>(0.49)    |
| Exchange Mkt Volatility  | -0.58<br>(1.99)     | -3.44*<br>(1.91)   | -2.78<br>(1.77)    | -3.60*<br>(1.96)   | -3.48*<br>(1.80)   |
| Exchange Mkt Spread      | -0.25<br>(0.46)     | -0.40<br>(0.48)    | -0.16<br>(0.40)    | -0.17<br>(0.48)    | -0.24<br>(0.41)    |
| Bank Crisis Dummy        | -0.18<br>(0.14)     | -0.15<br>(0.16)    | -0.11<br>(0.15)    | -0.16<br>(0.16)    | -0.11<br>(0.14)    |
| Crisis Dummy             | -1.87***<br>(0.54)  | -1.85***<br>(0.58) | -2.08***<br>(0.58) | -1.87***<br>(0.60) | -1.74***<br>(0.53) |
| Trend                    | -0.02<br>(0.02)     | -0.02<br>(0.02)    | -0.01<br>(0.02)    | -0.02<br>(0.02)    | 0.02<br>(0.02)     |
| Institutions             | -0.03<br>(0.06)     | 0.03<br>(0.08)     | 0.08<br>(0.06)     | 0.06<br>(0.08)     | 0.05<br>(0.07)     |
| Equity Mkt Development   | 0.11**<br>(0.05)    | 0.10*<br>(0.06)    | 0.10*<br>(0.05)    | 0.07<br>(0.07)     | 0.53***<br>(0.14)  |
| Trade/GDP                | -0.48***<br>(0.13)  | -0.37***<br>(0.14) | -0.28**<br>(0.13)  | -0.26*<br>(0.15)   | -0.32**<br>(0.13)  |
| real GDP per capita      | 0.02<br>(0.02)      | -0.00<br>(0.02)    | -0.03**<br>(0.01)  | -0.03***<br>(0.01) | -0.04***<br>(0.01) |
| Net Interest Margin      | -10.46***<br>(2.00) |                    |                    |                    |                    |
| Overheads                |                     | -3.21*<br>(1.94)   |                    |                    |                    |
| Return on Equity         |                     |                    | -0.97***<br>(0.36) |                    |                    |
| HHI                      |                     |                    |                    | -0.88<br>(0.76)    | -3.62***<br>(1.26) |
| EquityMktDevpt*HHI       |                     |                    |                    |                    | -4.68***<br>(1.42) |
| Constant                 | 1.36***<br>(0.44)   | 1.11**<br>(0.46)   | 1.06**<br>(0.44)   | 1.03**<br>(0.51)   | 0.54<br>(0.51)     |
| Observations             | 136                 | 136                | 136                | 124                | 124                |
| R-squared                | 0.54                | 0.50               | 0.52               | 0.51               | 0.55               |
| Number of coden          | 22                  | 22                 | 22                 | 20                 | 20                 |

Note. — Regressions use Prais-Winston 2SLS procedure with panel specific AR(1) error processes. Standard errors in parentheses.\*  $p < 0.1$ , \*\*  $p < 0.05$ , \*\*\*  $p < 0.01$ .

Table 11. Explaining De-facto Integration: Low and Middle Income Countries, II

|                          | 1                   | 2                  | 3                  | 4                 | 5                  |
|--------------------------|---------------------|--------------------|--------------------|-------------------|--------------------|
| De-Jure Openness         | 0.09**<br>(0.04)    | 0.08*<br>(0.04)    | 0.06*<br>(0.03)    | 0.07<br>(0.05)    | 0.05<br>(0.04)     |
| Interbank Mkt Volatility | -1.35**<br>(0.66)   | -1.23*<br>(0.65)   | -1.27*<br>(0.67)   | -1.08<br>(0.74)   | -0.98<br>(0.69)    |
| Exchange Mkt Volatility  | -0.77<br>(2.12)     | -3.20<br>(1.97)    | -2.23<br>(1.85)    | -3.09<br>(1.94)   | -3.01*<br>(1.70)   |
| Exchange Mkt Spread      | -0.50<br>(0.40)     | -0.75<br>(0.46)    | -0.37<br>(0.35)    | -0.34<br>(0.47)   | -0.22<br>(0.43)    |
| Bank Crisis Dummy        | -0.18<br>(0.14)     | -0.17<br>(0.16)    | -0.10<br>(0.16)    | -0.14<br>(0.17)   | -0.03<br>(0.15)    |
| Crisis Dummy             | -1.58***<br>(0.60)  | -1.65***<br>(0.63) | -1.85***<br>(0.62) | -1.53**<br>(0.62) | -1.25**<br>(0.54)  |
| Trend                    | -0.04<br>(0.02)     | -0.04<br>(0.03)    | -0.03<br>(0.02)    | -0.04<br>(0.03)   | -0.00<br>(0.03)    |
| Institutions             | -0.09<br>(0.08)     | -0.00<br>(0.10)    | 0.03<br>(0.08)     | -0.01<br>(0.09)   | -0.05<br>(0.09)    |
| Equity Mkt Development   | 0.10*<br>(0.06)     | 0.09<br>(0.07)     | 0.09<br>(0.06)     | 0.02<br>(0.06)    | 0.61***<br>(0.16)  |
| Trade Growth             | 0.24<br>(0.51)      | -0.16<br>(0.57)    | -0.06<br>(0.55)    | -0.24<br>(0.56)   | 0.13<br>(0.55)     |
| GDP per capita growth    | 0.01<br>(0.02)      | 0.02<br>(0.02)     | 0.03<br>(0.02)     | 0.05**<br>(0.03)  | 0.06**<br>(0.03)   |
| Trade/GDP                | -0.57***<br>(0.14)  | -0.48***<br>(0.16) | -0.36**<br>(0.15)  | -0.34**<br>(0.15) | -0.37***<br>(0.12) |
| real GDP per capita      | 0.06**<br>(0.03)    | 0.04<br>(0.03)     | 0.01<br>(0.02)     | 0.01<br>(0.02)    | 0.00<br>(0.02)     |
| Net Interest Margin      | -10.65***<br>(1.89) |                    |                    |                   |                    |
| Overheads                |                     | -3.50*<br>(1.97)   |                    |                   |                    |
| Return on Equity         |                     |                    | -1.16***<br>(0.42) |                   |                    |
| HHI                      |                     |                    |                    | -1.75**<br>(0.84) | -5.34***<br>(1.44) |
| EquityMktDevpt*HHI       |                     |                    |                    |                   | -6.18***<br>(1.63) |
| Constant                 | 1.50***<br>(0.48)   | 1.34**<br>(0.54)   | 1.21**<br>(0.50)   | 1.26**<br>(0.56)  | 0.51<br>(0.54)     |
| Observations             | 120                 | 120                | 120                | 110               | 110                |
| R-squared                | 0.56                | 0.53               | 0.55               | 0.54              | 0.59               |
| Number of coden          | 22                  | 22                 | 22                 | 20                | 20                 |

Note. — Regressions use Prais-Winston 2SLS procedure with panel specific AR(1) error processes. Standard errors in parentheses.\*  $p < 0.1$ , \*\*  $p < 0.05$ , \*\*\*  $p < 0.01$ .

Table 12. Trade/GDP Ratio and GDP per capita for Crisis and Non-Crisis Countries

|       | No Crisis                                 | <b>Countries with<br/>≥ 1 Crises</b> |
|-------|---|--------------------------------------|
|       | Trade-GDP ratio                           |                                      |
| Mean  | 0.90                                      | 0.97                                 |
| Range | [0.19 - 4.14]                             | [0.32 - 4.57]                        |
|       | GDP per capita<br>(Thousands of 2000 USD) |                                      |
| Mean  | 13.09                                     | 20.19                                |
| Range | [0.44 - 40.72]                            | [0.93 - 42.43]                       |

Note. — Crisis countries are those with at least one currency crisis in the sample (except the year 2008 which is considered a crisis year for all countries in the sample).

Table 13. XY Standardized Coefficients

|                          | Table 6 |          | Table 7 |          | Table 8 |          | Table 9 |          | Table 10 |          | Table 11 |          |
|--------------------------|---------|----------|---------|----------|---------|----------|---------|----------|----------|----------|----------|----------|
|                          | Largest | Smallest | Largest | Smallest | Largest | Smallest | Largest | Smallest | Largest  | Smallest | Largest  | Smallest |
| De-Jure Openness         | 0.24    | 0.21     | 0.21    | 0.18     | 0.45    | 0.35     | 0.38    | 0.35     | 0.22     | 0.12     | 0.17     | 0.09     |
| Interbank Mkt Volatility | -0.02   | -0.02    | 0.00    | -0.02    | 0.05    | 0.01     | 0.05    | 0.02     | -0.09    | -0.15    | -0.10    | -0.14    |
| Exchange Mkt Volatility  | -0.01   | -0.01    | -0.01   | -0.01    | 0.00    | -0.01    | 0.00    | -0.01    | -0.01    | -0.01    | -0.01    | -0.01    |
| Exchange Mkt Spread      | -0.09   | -0.11    | -0.11   | -0.15    | 0.02    | -0.04    | -0.02   | -0.12    | -0.02    | -0.07    | -0.04    | -0.13    |
| Bank Crisis Dummy        | -0.08   | -0.12    | -0.07   | -0.08    | -0.08   | -0.11    | -0.05   | -0.11    | -0.06    | -0.10    | -0.02    | -0.10    |
| Crisis Dummy             | -0.11   | -0.13    | -0.09   | -0.13    | 0.04    | -0.08    | 0.03    | -0.06    | -0.39    | -0.46    | -0.28    | -0.42    |
| Trend                    | 0.20    | 0.20     | 0.20    | 0.20     | 0.58    | 0.43     | 0.58    | 0.58     | 0.08     | -0.08    | 0.00     | -0.16    |
| Institutions             | 0.14    | 0.09     | 0.14    | 0.11     | 0.14    | 0.11     | 0.17    | 0.14     | 0.10     | 0.00     | 0.04     | 0.00     |
| Equity Mkt Development   | 0.09    | 0.00     | 0.06    | 0.00     | 0.00    | 0.00     | 0.00    | 0.00     | 0.79     | 0.10     | 0.90     | 0.03     |
| Trade Growth             | 0.00    | -0.02    |         |          | 0.00    | -0.06    |         |          | 0.04     | -0.03    |          |          |
| GDP per capita growth    | 0.31    | 0.18     |         |          | 0.07    | 0.07     |         |          | 0.29     | 0.05     |          |          |
| Trade/GDP                | -0.09   | -0.12    | -0.13   | -0.15    | 0.37    | 0.33     | 0.35    | 0.31     | -0.15    | -0.30    | -0.25    | -0.42    |
| real GDP per capita      | 0.00    | 0.00     | 0.00    | 0.00     | 0.00    | -0.76    | -0.77   | -1.03    | 0.04     | -0.07    | 0.17     | 0.00     |
| Net Interest Margin      | -0.16   | -0.16    | -0.13   | -0.13    | 0.03    | 0.03     | 0.02    | 0.02     | -0.40    | -0.40    | -0.40    | -0.40    |
| Overheads                | -0.01   | -0.01    | 0.03    | 0.03     | 0.05    | 0.05     | 0.05    | 0.05     | -0.10    | -0.10    | -0.10    | -0.10    |
| Return on Equity         | -0.01   | -0.01    | -0.02   | -0.02    | 0.10    | 0.10     | 0.09    | 0.09     | -0.17    | -0.17    | -0.19    | -0.19    |
| HHI                      | 0.02    | 0.01     | -0.03   | -0.05    | -0.06   | -0.06    | -0.05   | -0.05    | -0.08    | -0.35    | -0.16    | -0.49    |
| EquityMktDevpt*HHI       | -0.13   | -0.13    | -0.12   | -0.12    | 0.01    | 0.01     | -0.01   | -0.01    | -0.83    | -0.83    | -1.06    | -1.06    |

Note. — XY Standardized coefficients are obtained by multiplying the estimated coefficient by the standard deviation of the explanatory variable and dividing by the standard deviation of the independent variable. Values given here are approximate.

Table 14. Low and Middle Income Group, Robustness Check I: Lagged values of bank competition measures

|                          | 1                  | 2                  | 3                  | 4                  | 5                 |
|--------------------------|--------------------|--------------------|--------------------|--------------------|-------------------|
|                          | (1)                | (2)                | (3)                | (4)                | (5)               |
| De-Jure Openness         | 0.08**<br>(0.04)   | 0.08*<br>(0.04)    | 0.08*<br>(0.05)    | 0.08<br>(0.05)     | 0.06<br>(0.05)    |
| Interbank Mkt Volatility | -1.29*<br>(0.67)   | -1.15*<br>(0.67)   | -1.07*<br>(0.60)   | -1.12<br>(0.73)    | -1.34*<br>(0.74)  |
| Exchange Mkt Volatility  | -3.23<br>(2.08)    | -3.02<br>(2.07)    | -3.23*<br>(1.89)   | -3.09<br>(2.03)    | -3.62*<br>(1.90)  |
| Exchange Mkt Spread      | -0.27<br>(0.38)    | -0.59<br>(0.43)    | -0.83*<br>(0.43)   | -0.43<br>(0.44)    | -0.14<br>(0.36)   |
| Bank Crisis Dummy        | -0.13<br>(0.15)    | -0.19<br>(0.16)    | -0.24<br>(0.17)    | -0.22<br>(0.17)    | -0.14<br>(0.16)   |
| Crisis Dummy             | -1.65***<br>(0.63) | -1.62***<br>(0.63) | -1.68***<br>(0.62) | -1.65***<br>(0.63) | -1.25*<br>(0.64)  |
| Trend                    | -0.04<br>(0.02)    | -0.04<br>(0.03)    | -0.03<br>(0.02)    | -0.05*<br>(0.03)   | -0.05<br>(0.03)   |
| Institutions             | -0.02<br>(0.08)    | -0.01<br>(0.09)    | 0.03<br>(0.09)     | 0.03<br>(0.09)     | 0.04<br>(0.08)    |
| Equity Mkt Development   | 0.10*<br>(0.06)    | 0.08<br>(0.07)     | 0.08<br>(0.07)     | 0.05<br>(0.07)     | 0.30***<br>(0.10) |
| Trade Growth             | -0.04<br>(0.53)    | -0.12<br>(0.58)    | -0.33<br>(0.59)    | -0.08<br>(0.56)    | 0.21<br>(0.53)    |
| GDP per capita growth    | 0.03<br>(0.02)     | 0.03<br>(0.02)     | 0.02<br>(0.02)     | 0.04<br>(0.03)     | 0.04<br>(0.03)    |
| Trade/GDP                | -0.52***<br>(0.15) | -0.52***<br>(0.15) | -0.38***<br>(0.14) | -0.33**<br>(0.15)  | -0.32**<br>(0.13) |
| real GDP per capita      | 0.05*<br>(0.03)    | 0.05**<br>(0.02)   | 0.01<br>(0.02)     | 0.00<br>(0.02)     | -0.00<br>(0.02)   |
| L.Net Interest Margin    | -7.17***<br>(1.80) |                    |                    |                    |                   |
| L.Overhead               |                    | -6.52***<br>(1.75) |                    |                    |                   |
| L.Return on Equity       |                    |                    | 0.59<br>(0.53)     |                    |                   |
| L.HHI                    |                    |                    |                    | -0.86<br>(0.65)    | -2.94**<br>(1.20) |
| L.Equity Mkt Devpt*HHI   |                    |                    |                    |                    | -3.43**<br>(1.38) |
| Constant                 | 1.47***<br>(0.52)  | 1.43**<br>(0.56)   | 1.19**<br>(0.54)   | 1.50**<br>(0.60)   | 1.54***<br>(0.57) |
| Observations             | 120                | 120                | 120                | 109                | 109               |
| R-squared                | 0.55               | 0.54               | 0.54               | 0.55               | 0.58              |
| Number of coden          | 22                 | 22                 | 22                 | 20                 | 20                |

Note. — Fixed effects estimators. Serial correlation correction using Prais-Winston 2SLS Estimator. Standard errors in parentheses.\*  $p < 0.1$ , \*\*  $p < 0.05$ , \*\*\*  $p < 0.01$ .

Table 15. Low and Middle Income Group, Robustness Check II: Lagged values of potentially endogenous variables

|                            | 1                  | 2                  | 3                  | 4                  | 5                  |
|----------------------------|--------------------|--------------------|--------------------|--------------------|--------------------|
|                            | (1)                | (2)                | (3)                | (4)                | (5)                |
| De-Jure Openness           | 0.10***<br>(0.03)  | 0.11***<br>(0.03)  | 0.10***<br>(0.03)  | 0.09**<br>(0.04)   | 0.08*<br>(0.04)    |
| L.Interbank Mkt Volatility | -0.02<br>(0.53)    | 0.07<br>(0.53)     | 0.05<br>(0.53)     | 0.17<br>(0.58)     | 0.16<br>(0.57)     |
| L.Exchange Mkt Volatility  | -4.03***<br>(1.25) | -4.45***<br>(1.18) | -4.84***<br>(1.33) | -4.28***<br>(1.20) | -3.37***<br>(1.18) |
| L.Exchange Mkt Spread      | 0.72**<br>(0.37)   | 0.72*<br>(0.37)    | 0.56<br>(0.39)     | 1.13***<br>(0.35)  | 1.14***<br>(0.33)  |
| Bank Crisis Dummy          | -0.12<br>(0.15)    | -0.12<br>(0.14)    | -0.21<br>(0.17)    | -0.13<br>(0.15)    | -0.01<br>(0.14)    |
| Crisis Dummy               | -1.74***<br>(0.62) | -1.73***<br>(0.60) | -1.65***<br>(0.58) | -1.65***<br>(0.62) | -1.83***<br>(0.57) |
| Trend                      | -0.04<br>(0.03)    | -0.04<br>(0.03)    | -0.04<br>(0.03)    | -0.06*<br>(0.03)   | -0.03<br>(0.03)    |
| Institutions               | 0.05<br>(0.08)     | 0.03<br>(0.08)     | 0.03<br>(0.08)     | 0.03<br>(0.08)     | 0.04<br>(0.07)     |
| L.Equity Mkt Development   | 0.09<br>(0.08)     | 0.09<br>(0.08)     | 0.07<br>(0.08)     | -0.01<br>(0.08)    | 0.35***<br>(0.12)  |
| Trade Growth               | 0.10<br>(0.52)     | 0.10<br>(0.52)     | 0.01<br>(0.54)     | 0.32<br>(0.51)     | 0.61<br>(0.52)     |
| L.GDPpcgr                  | 0.01<br>(0.02)     | 0.01<br>(0.02)     | 0.01<br>(0.02)     | 0.03<br>(0.02)     | 0.04**<br>(0.02)   |
| Trade/GDP                  | -0.33***<br>(0.12) | -0.36***<br>(0.13) | -0.27**<br>(0.13)  | -0.17<br>(0.15)    | -0.19<br>(0.13)    |
| L.real GDP per capita      | -0.01*<br>(0.01)   | -0.00<br>(0.01)    | -0.01<br>(0.01)    | -0.03***<br>(0.01) | -0.04***<br>(0.01) |
| L.Net Interest Margin      | -2.30<br>(1.57)    |                    |                    |                    |                    |
| L.Overheads                |                    | -3.41***<br>(1.29) |                    |                    |                    |
| L.ROE                      |                    |                    | 0.90**<br>(0.43)   |                    |                    |
| L.HHI                      |                    |                    |                    | -1.64**<br>(0.75)  | -3.93***<br>(1.26) |
| L.Equity Mkt Devpt*HHI     |                    |                    |                    |                    | -3.74***<br>(1.29) |
| Constant                   | 1.21**<br>(0.59)   | 1.25**<br>(0.59)   | 1.09*<br>(0.57)    | 1.48**<br>(0.61)   | 0.88<br>(0.61)     |
| Observations               | 114                | 114                | 114                | 104                | 104                |
| R-squared                  | 0.38               | 0.38               | 0.38               | 0.40               | 0.44               |
| Number of coden            | 21                 | 21                 | 21                 | 19                 | 19                 |

Note. — Fixed effects estimators. Serial correlation correction using Prais-Winston 2SLS Estimator. Standard errors in parentheses.\*  $p < 0.1$ , \*\*  $p < 0.05$ , \*\*\*  $p < 0.01$ .



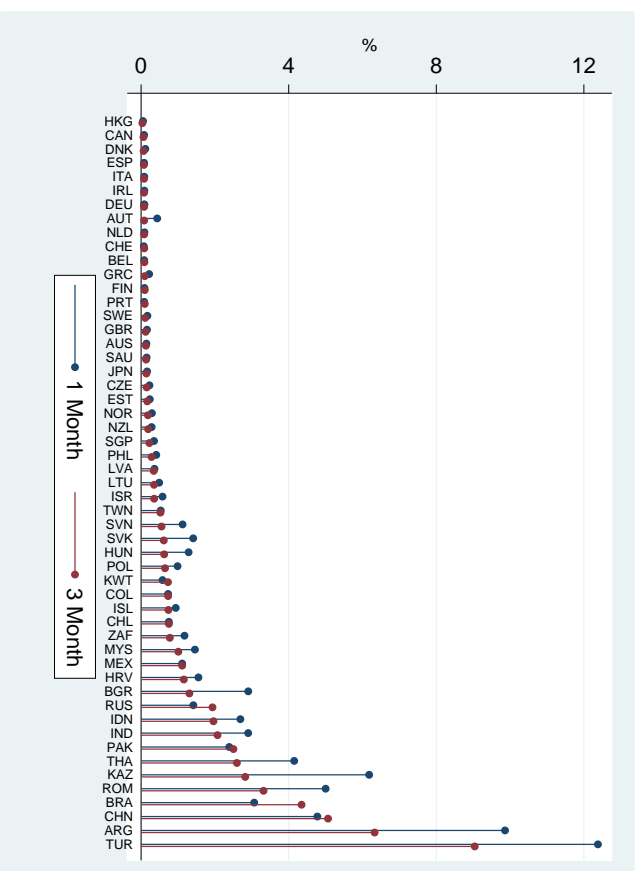


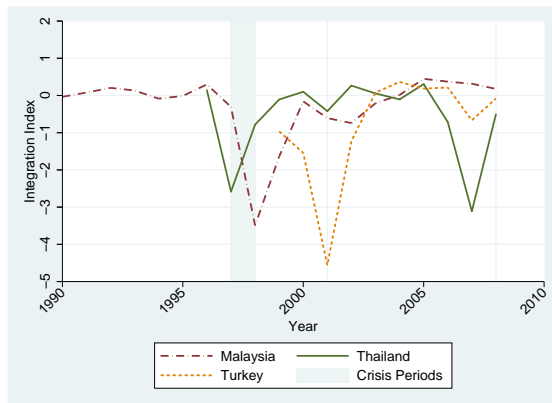
Figure 1: . Average Estimated Bandwidth for 2000-2006.



(a) By Income Group



(b) By Income Group, Excluding Malaysia, Thailand and Turkey.



(c) Crisis Countries.

Figure 2: Integration Index

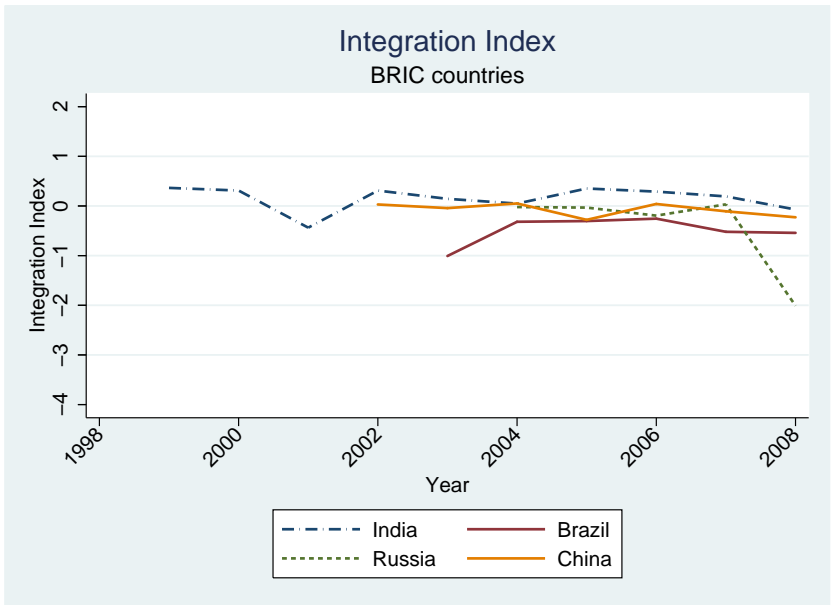


Figure 3: . Integration Index, BRICs.

## Appendix

### Data Sources

| Variable Name    | Description & Source  |
|------------------|---|
| HHI              | <p>Sum of squared shares of top 50 firms in industry assets. Individual firm data was collected from bankscope on all banks (commercial, savings, cooperative and islamic), bank holding companies and investment banks. Consolidated statements were used where available. Bankscope provides data on individual firms and to compute the share of each firm in industry assets, the firm level data was aggregated for each country-year observation. The coverage of bankscope data is uneven, due to which some filters were applied. First, wherever BIS data on industry assets was available (and larger than bankscope totals), the BIS data was used. Second, (country-year) observations where industry assets or number of banks available were less than the 1<sup>st</sup> percentile of all observations were dropped. Third, observations for which there were extreme changes in number of banks or industry assets (outside the (1 99) percentile range) were dropped. For example, if the number of banks in the next year jumped by an extremely large value, the current year's observations were dropped, but if the next year's number of banks was unusually lower than the current year's then the next year's observations were dropped. The percentiles were defined for the whole sample (all country-year observations). Finally, the same extreme value and extreme changes filters were applied to the HHI. In cases where the resulting HHI series had gaps, the data was interpolated using linear interpolation.</p> <p><i>Source:</i> BvDep's Bankscope database and Bank for International Settlements</p> |
| Bank Crisis      | <p>Dummy Variable, 1 if the year is a banking crisis year.</p> <p><i>Source:</i> Laeven and Valencia (2008)</p>   |
| Currency Crisis  | <p>Dummy Variable, 1 if the year has a crisis month. Crisis month identified as months where an index of currency market pressure (defined as a weighted average of exchange rate and reserve changes) exceeds the mean by 3 or more standard deviations, as in Kaminsky and Reinhart (1999). Data on exchange rates, inflation rates and reserve assets from IMF International Financial Statistics database.</p>  |
| De-jure Openness | <p>Chinn Ito (2007) measure of de-jure openness, higher values indicate greater legal restrictions on flows of capital.</p>   |

Data Sources (contd.)

| Variable Name            | Description & Source  |
|--------------------------|---|
| Exchange Mkt Spread      | Yearly average of daily closing bid-ask spread on the spot exchange rate, as a percentage of the mean rate.<br><i>Source:</i> Thomson Financial's Datastream  |
| Exchange Mkt Volatility  | Average of the within-year coefficient of variation in 1 and 3 month forward exchange rates.<br><i>Source:</i> Bloomberg and Datastream   |
| Equity Mkt Development   | Equity market development index, constructed as first principal component of stock market capitalization and stock market value traded as % of GDP. Higher values indicate greater development.<br><i>Source:</i> Beck et. al. (2000)   |
| Index                    | Integration index constructed using TAR models on CIP differentials. The index is centered at 0 and higher values indicate greater openness. The US is assumed to be the home country in the construction of CIP deviations. Differentials are based on onshore forward rates, except for Chile, where NDF rates were used. The daily data on onshore forward rates, spot rates and interbank interest rates on 1 and 3 month maturity loans are from Bloomberg, Datastream and Global Financial Database. Closing prices used in all calculations. |
| Institutions             | Institutional variable, first principal component of ICRG Corruption and Law and Order indices.<br><i>Source:</i> PRG International Country Risk Guide.   |
| Interbank Mkt Volatility | Average of the within-year coefficient of variation in 1 and 3 month interbank interest rates.<br><i>Source:</i> Bloomberg, Global Financial Database and Datastream  |
| Net Interest Margin.     | Net Interest Margins in Banking. This variable equals the accounting value of banks' net interest revenue as a share of its total assets.<br><i>Source:</i> Beck et.al (2000)   |
| Overheads                | Accounting value of a country's banks' overhead costs as a share of their total assets.<br><i>Source:</i> Beck et. al. (2000)   |
| real GDP per capita      | Per capita GDP in thousands of 2000 USD.<br><i>Source:</i> World Bank's World Development Indicators.   |
| Return on Equity (ROE)   | Banks' return on equity.<br><i>Source:</i> Beck et.al. (2000)   |
| Trade                    | Trade as % of GDP.<br><i>Source:</i> World Bank's World Development Indicators database   |